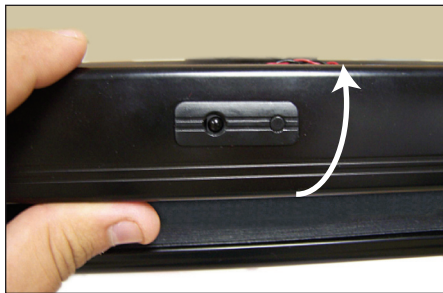
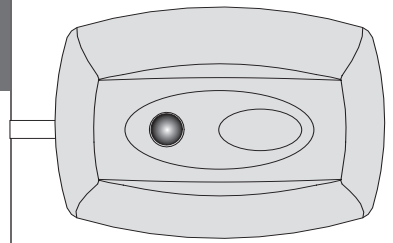
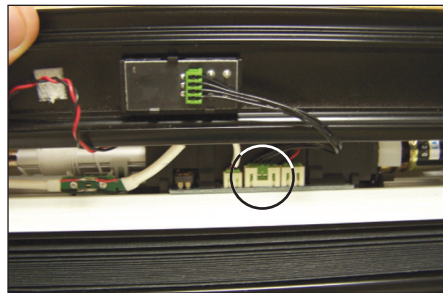


HunterDouglas

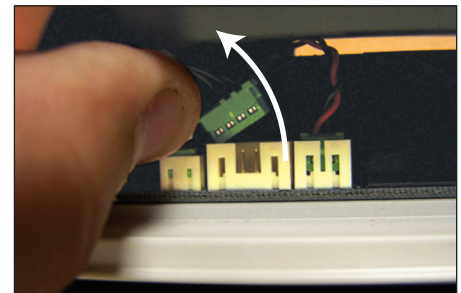
Retrofitting a Duette® PowerRise® Shade with Platinum™ Technology



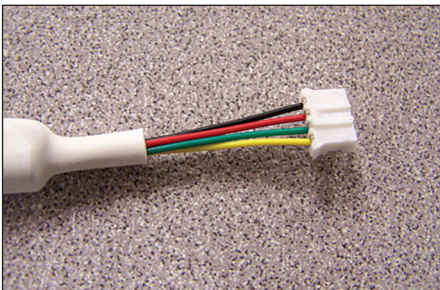
1. Open the headrail cover by lifting with your thumb. The cover is hinged at the top.



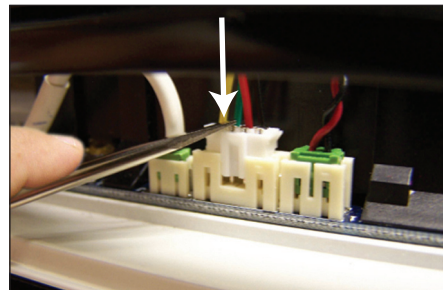
2. Find the center socket (circled in the photo). It is the largest of the three.



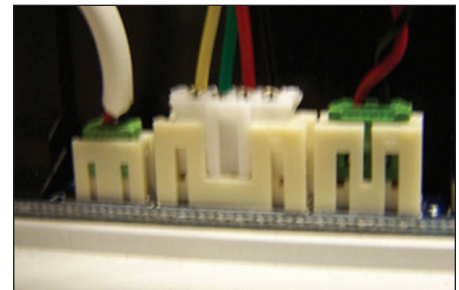
3. Unplug the connector (if needed, pry it up with a small tool). Tape the connector and its cable away from any moving parts.



4. The 4-pin connector for the Platinum™ satellite eye is shown above.



5. Plug the 4-pin connector into the socket. Press it into place with a small tool. Position the cable away from any moving parts.



6. The fully seated connector is shown. It fits into the socket only one way.



7. Close the headrail cover and mount the eye where you can see it. Program the shade using the *Platinum Technology Remote Control Guide*.

NOTE: After programming the shade, you may hide the Platinum satellite eye (in RF Group mode, the remote control does not need line-of-sight to the eye).

The PCNs (part numbers) of the Platinum Satellite Eye are:

- 2980000203 (20" cable)
- 2980000225 (48" cable)
- 2980000226 (96" cable)

Radio Frequency FCC Compliance:

The device complies with part 15 of the FCC Rules. Operation is subject to the following two conditions: (1) This device may not cause harmful interference, and (2) this device must accept any interference received, including interference that may cause undesired operation.

This equipment has been tested and found to comply with the limits for a Class B digital device, pursuant to Part 15 of the FCC Rules. These limits are designed to provide reasonable protection against harmful interference in a residential installation. This equipment generates, uses, and can radiate radio frequency and, if not installed and used in accordance with the instructions, may cause harmful interference to radio communications. However, there is no guarantee that interference will not occur in a particular installation. If this equipment does cause harmful interference to radio or television reception, which can be determined by turning the equipment off and on, the user is encouraged to try to correct the interference by one or more of the following measures:

- Reorient or relocate the receiving antenna
- Increase the separation between the equipment and receiver.
- Connect the equipment into an outlet on a circuit different from that to which the receiver is connected.
- Consult the dealer or an experienced radio/TV technician for help.

Any changes or modifications not expressly approved by the party responsible for compliance could void the user's authority to operate the equipment.

Questions?

Call the Hunter Douglas Customer Information Center at:
1-888-501-8364.

© 2009 Hunter Douglas.
® Registered trademark of Hunter Douglas.™ Trademark of Hunter Douglas.

5110540106



05/09