



SUSSEX®
SHUTTERS

Sussex® Shutters

CUSTOMIZED LUXURY by Norman Shutters®

Sussex® Shutters

Log

Date	Topic	Page	Note
July 08	Pricing	SU m	PerfectTilt surcharges
Nov 08	Track system	SU j	Updated specs (single panel width)
Dec 08	Specialty	SU i	Added "Triangle"
Dec 08	Hinges	SU i	New hinges
Mar 09	Appendix	SU n	Black hinge will be the default hinge for SU020 Black
Apr 09	Hinges	SU i	Oil-rubbed hinge discontinued
Apr 09	Stile	SU c	Thicker astragal stile

Sussex® Shutters

Table of Contents	Page
a. Features & Benefits	SU a-1
b. Colors & Louvers	SU b-1
c. Stiles	SU c-1
d. Panel Configurations	SU d-1
e. Frame Styles	SU e-1
f. General Product Specifications	SU f-1
g. Tilt Rods	SU g-1
h. Divider Rails	SU h-1
i. Hinges	SU i-1
j. Track Shutters	SU j-1
k. Special Options	SU k-1
l. Specialties	SU l-1
m. Pricing, Options & Surcharges	SU m-1
n. Appendix	SU n-1

Effective2008



Features and Benefits

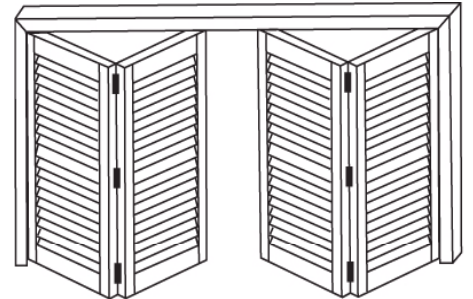
- Made of hand-selected basswood that is treated with **Prescription Wood Conditioning™** technique according to the moisture content of the final installation location to reduce post-installation shrinking and swelling.
- Louvers are made of **quarter-sawn wood** to ensure generations of durability. This tight, straight and parallel grain also enriches wood character in stain finish.
- The appearance of **furniture quality finish** and the **exceptional craftsmanship** gives Sussex shutters an instant feeling of art.
- A wide range of **innovative frame designs**, including frames with inserts that keep installation screws out of sight for a clean and decorative look.
- **Reinforced engineered stile**-- Multiple layers of wood bonded together to reinforce durability to the core of the stile, which results in a robust support system for the shutter panel.
- Employs **mortise and tenon joinery** that resists shear and racking forces endured by shutters to ensure prolonged quality and durability.
- **Multiple stile options** available in various sizes to accommodate different window designs. Use **Astragal** or **Rabbet stile** as a natural light block between panels.
- Quick and easy on-site installation with the **pre-installed magnets and hinges**, as well as **pre-mitered frames** and **slotted keyholes**.
- A labor-intensive **hand finishing** process that involves **multiple sanding and coatings** with fine layers of stain or paint to achieve a translucent and polished appearance.
- **Special panel and frame design** that is custom cut to accommodate unique windows. Create unity or attract attention with Sussex's exclusive decorative elements.
- Personalize shutters with **special options**. Choose from fixed louvers, center or offset tilt rod, double hung panels, café shutters, track systems, French door cutout, specialty shapes and many more.
- Available in a **multitude of solid and stain colors** that can match the style of any home.
- A guarantee of Norman Shutters' exemplary quality with a **lifetime limited warranty on materials and workmanship**.

Sussex® Shutters

Track Shutters—Bifold & Multi-fold

Guidelines and Specs:

Description	Minimum	Maximum		
		1 1/4"	1 7/8"	2 1/2" / 3 1/2" / 4 1/2"
Single-Panel Width (Bifold Track)	6"	N/A	26"	26"
Single-Panel Width (Multifold track up to 4 panels)	6"	N/A	20"	20"
Single-Panel Height	10"	133"	133"	133"



Outside Mount

Max frame-to-frame width: window width + 3"

Max frame-to-frame height: window height + 4 1/2"

Semi-Inside Mount

Max frame-to-frame width: window width - 1/8"

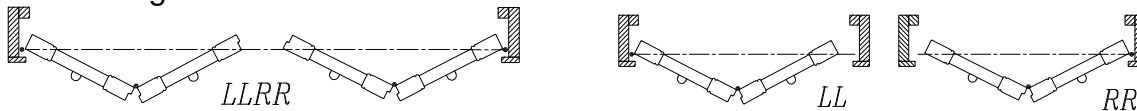
Max frame-to-frame height: window height + 1 3/8"

Inside Mount

Max frame-to-frame width: window width - 1/8"

Max frame-to-frame height: window height - 1/8"

Panel Configuration:



The max frame-to-frame height measurement should be from the floor to the top of the fascia, and the width measurement should be from the left side frame to the right side frame.

- Track is pre-installed on the header; standard 1 track only.
- Wheel carrier bracket and top pivot are pre-installed on the panel.
- Top pivot bracket, wheels and buffers will be installed in the track.
- Support L brackets on header are provided for OM boxout.

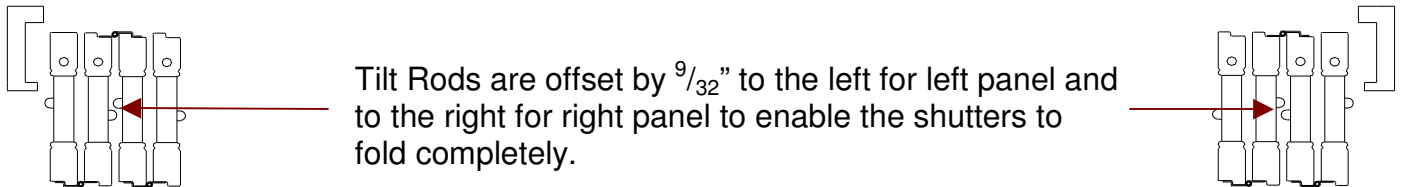
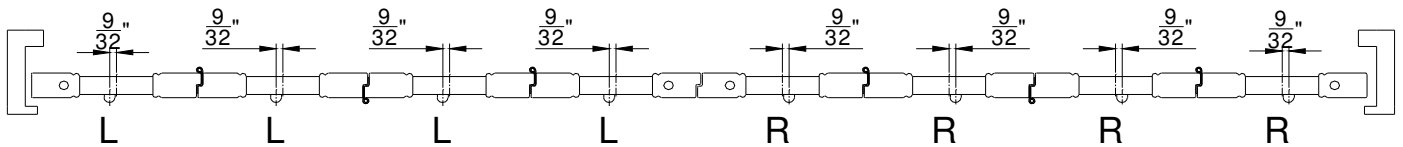
Sussex® Shutters

Track Shutters—Bifold & Multi-fold

Multi-Fold Track Shutters

Maximum single panel width for multi-fold is 20"

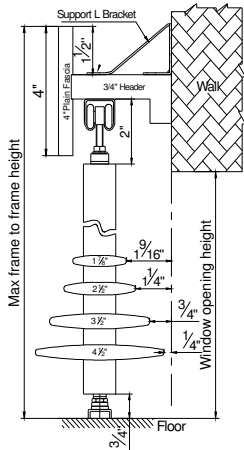
Panel Configuration : LLLL, RRRR, or LLLLRRRR



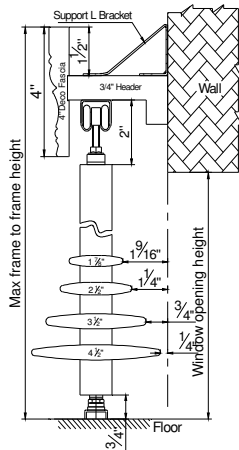
Sussex® Shutters

Track Shutters—Bifold & Multi-fold

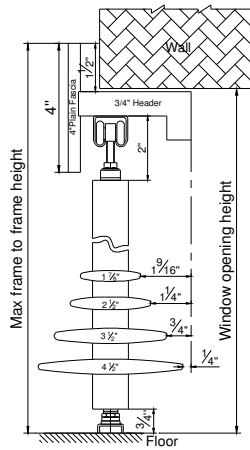
Mounting Options



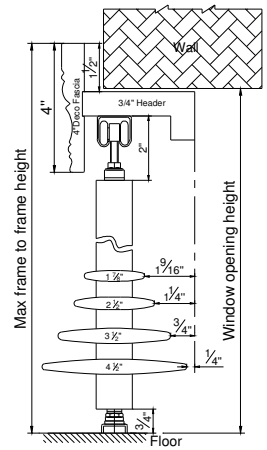
Plain Boxout



Deco Boxout



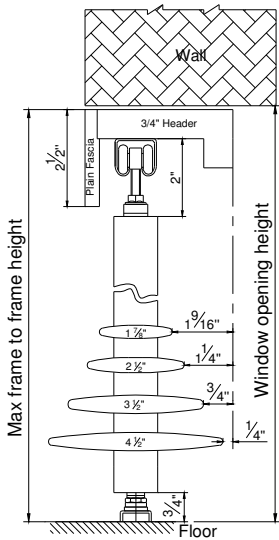
Plain Boxout



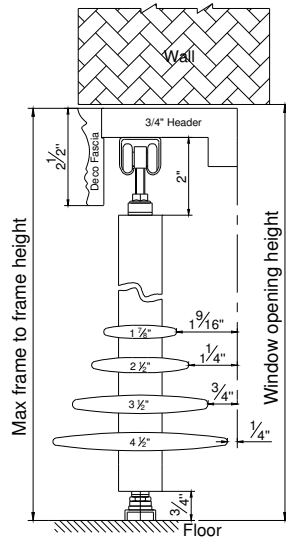
Deco Boxout

Outside Mount

Semi-Inside Mount



Plain Boxout



Deco Boxout

Inside Mount

Track Shutters—Bifold & Multi-fold

Track Shutters Framing Materials

Framing	Size			Pc(s)
L Shape Header (2 in 1) Header with Supporting Strip	Header	Supporting Strip		1 pc
	¾" x 3½"* (Default) ¾" x 4½"* or 5½"* (Optional) Custom * ≤ 8"	¾" x ¾"		
U Shape Side Frame (3 in 1) Side Frame with Supporting Strip & Side Fascia	Side Frame	Supporting Strip	Side Fascia	2 pcs
	¾" x 3½"* (Default) ¾" x 4½"* or 5½"* (Optional) Custom * ≤ 8"	¾" x ¾"	⅜" x 1¼"	
Top Fascia (Plain/Deco)	4" (semi-inside and outside mount) 2½" (inside mount)			1 pc
Top Fascia Return	4" (semi-inside and outside mount) N/A (inside mount)			2 pcs

* L Shape Header and U Shape Side Frame are only available in 3½", 4½" and 5½". For other sizes, these framing materials come in separate pieces.

* If framing material in separate pieces is preferred for 3½", 4½" and 5½", please state clearly under the Special Instructions section of the order form.

Track Shutters—Bifold & Multi-fold

Hardware Box

Hardware Box	
Part	Qty
Wrench	3
Touch up paint	1
Bottom Pivot Bracket	1 for panels folding in one direction 2 for panels folding in both directions
¾" screws for bottom pivot bracket	3 screws for each bottom pivot bracket
1½" screws for bottom pivot bracket	1 screw for each bottom pivot bracket
Hinge Pin	According to number of hinges
¾" screws for support L bracket to header	3 for each support L bracket
2½" screws for support L bracket to wall	2 for each support L bracket
Support L Bracket (based on the length of header)	Header length: <ul style="list-style-type: none"> ● Less than 90" — 2 brackets included ● 90" ~ 120" — 3 brackets included ● 120" ~ 150" — 4 brackets included For header length 150" and above, 1 bracket will be added for each additional 30"

Track Shutters—Bypass

Guidelines and Specs:

<u>Description</u>	<u>Minimum</u>	<u>Maximum</u>		
		1 ¼"	1 ⅞"	2½" / 3½" / 4½"
Single-Panel Width (Regular)	6"	16"	30"	36"
Single-Panel Width (for Bypass with Center Stile)	6"	N/A	30" ~ 50"	36" ~ 50"
Single-Panel Height	10"	133"	133"	133"

Outside Mount

Max frame-to-frame width: window width + 3"

Max frame-to-frame height: window height + 4½"

Semi-Inside Mount

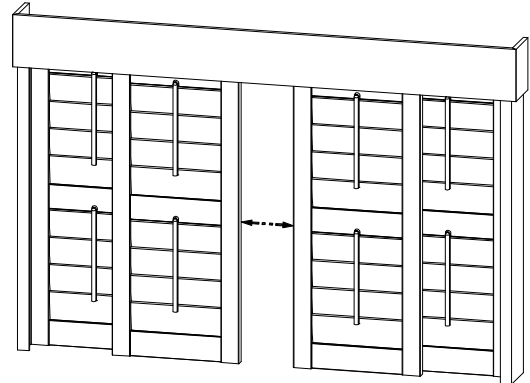
Max frame-to-frame width: window width - ⅛"

Max frame-to-frame height: window height + 1 ⅜"

Inside Mount

Max frame-to-frame width: window width - ⅛"

Max frame-to-frame height: window height - ⅛"



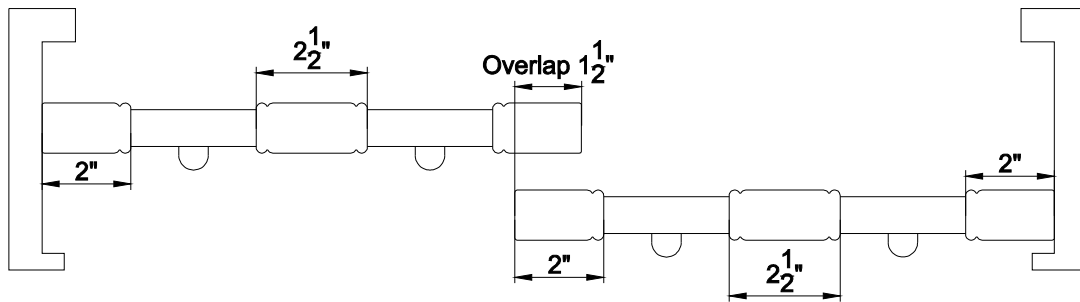
The max frame-to-frame height measurement should be from the floor to the top of the fascia, and the width measurement should be from the left side frame to the right side frame.

- Tracks are pre-installed on the header; standard 2 tracks only.
- Wheel carrier bracket and bottom guide are pre-installed on the panel.
- Wheels and buffers will be installed in the track.
- Support L brackets are provided for OM boxout.

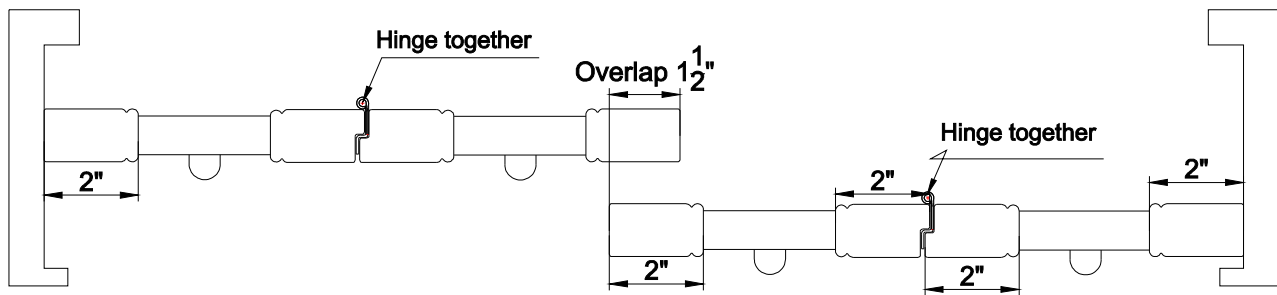
Track Shutters—Bypass

Closed Bypass

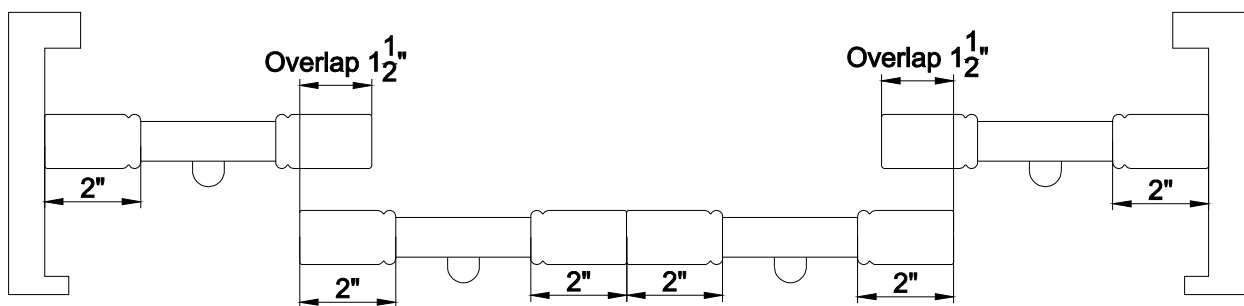
Panels with center stile (optional)



For shutters with 4 or more panels, please select “side open” or “center open” .



Side Open

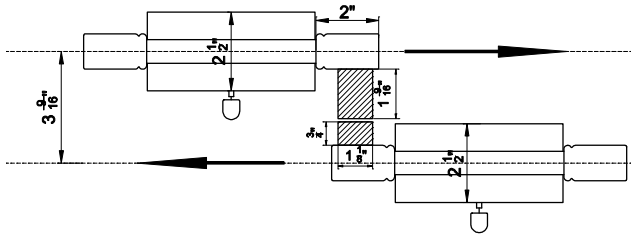


Center Open

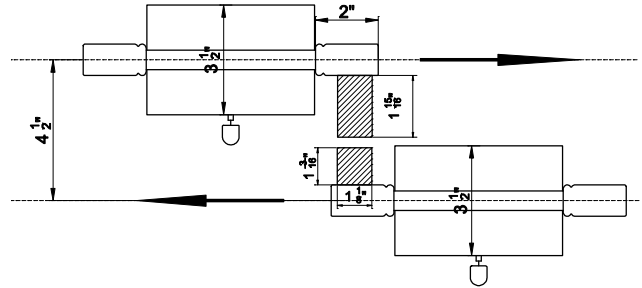
Sussex® Shutters

Opened Bypass

Bypass panels with **Regular Tilt Rod**
—for U shape/ interlocking bottom guide*

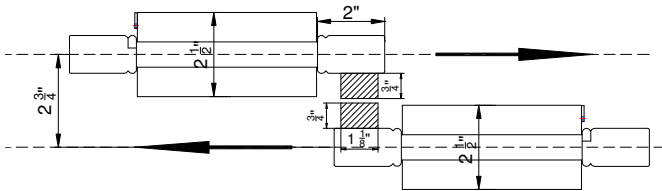


2 1/2" Louver

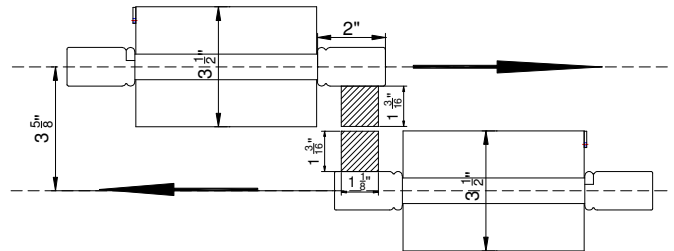


3 1/2" Louver

Bypass panels with **Hidden Tilt Rod***
—for U shape bottom guide

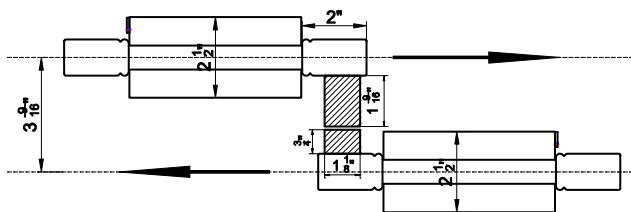


2 1/2" Louver

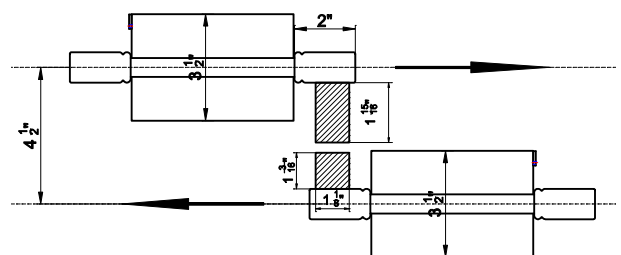


3 1/2" Louver

Bypass panels with **Hidden Tilt Rod***
—for interlocking bottom guide*



2 1/2" Louver

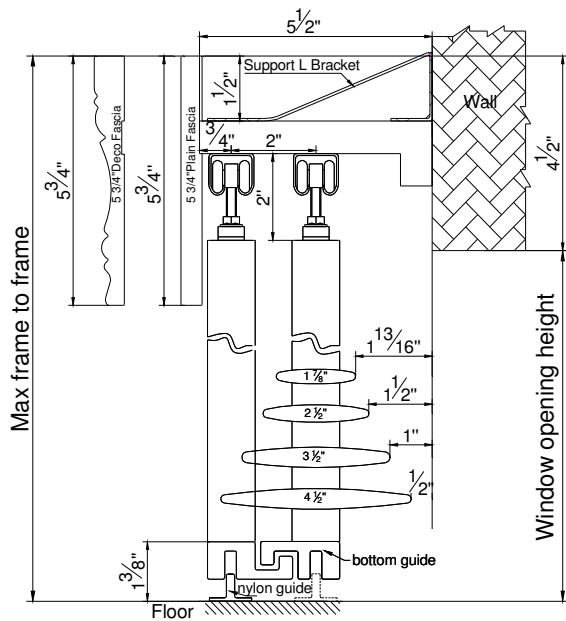


3 1/2" Louver

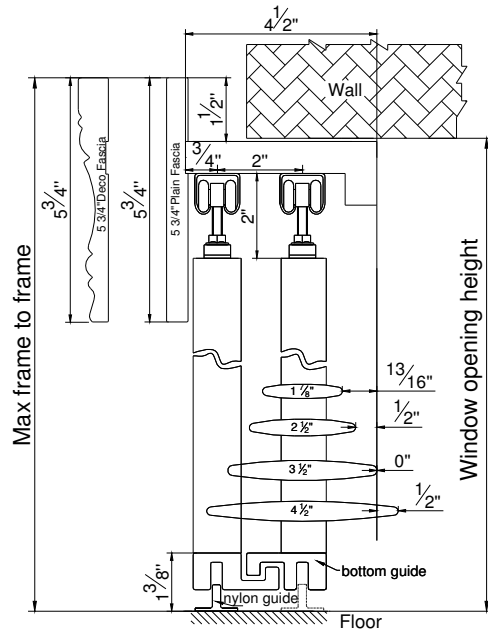
* Surcharge applies. Please see Options and Surcharges page for details

Track Shutters—Bypass

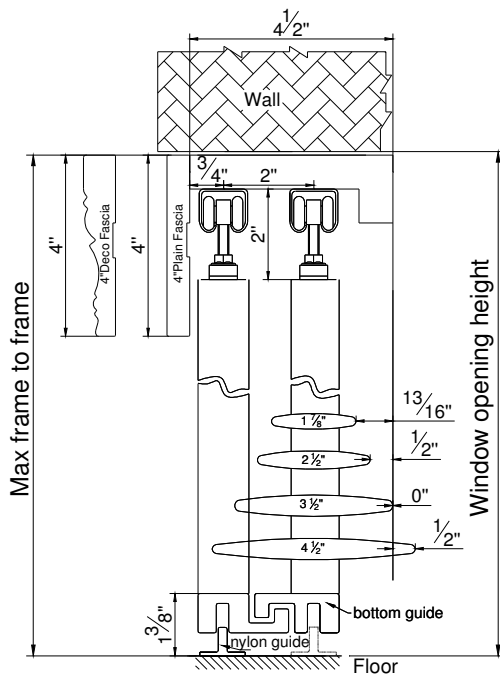
Mounting Options (Closed Bypass)



Outside Mount



Semi-Inside Mount



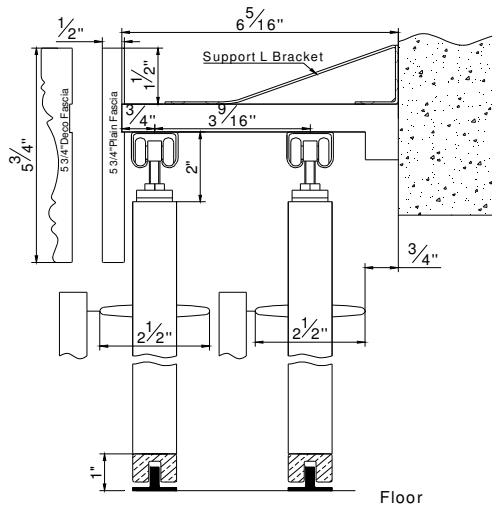
Inside Mount

Track Shutters—Bypass

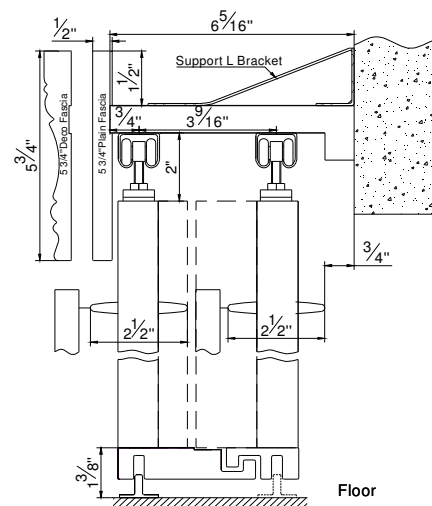
Mounting Options (Opened Bypass)*

- Only available in 2 1/2" and 3 1/2" louver sizes

2 1/2" Louver (Outside Mount)

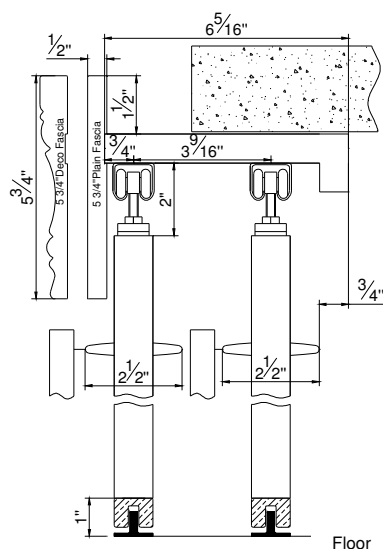


Default Bottom Guide

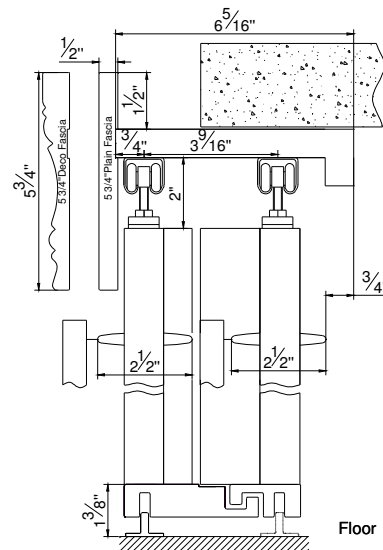


Optional Interlocking Bottom Guide*

2 1/2" Louver (Semi-Inside Mount)



Default Bottom Guide



Optional Interlocking Bottom Guide*

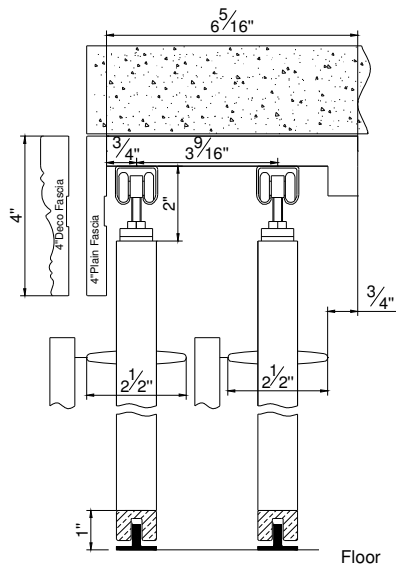
* Surcharge applies. Please see Options and Surcharges page for details.

Track Shutters—Bypass

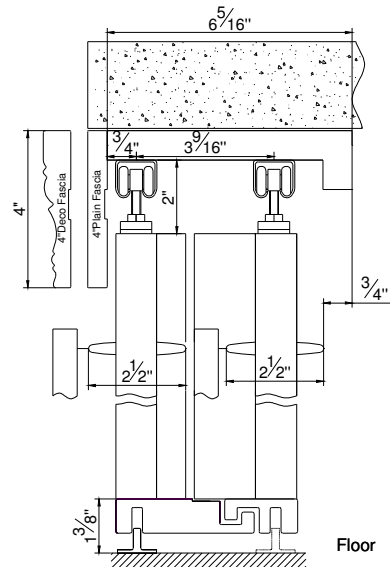
Mounting Options (Opened Bypass)*

- Only available in 2 1/2" and 3 1/2" louver sizes

2 1/2" Louver (Inside Mount)



Default Bottom Guide



Optional Interlocking Bottom Guide*

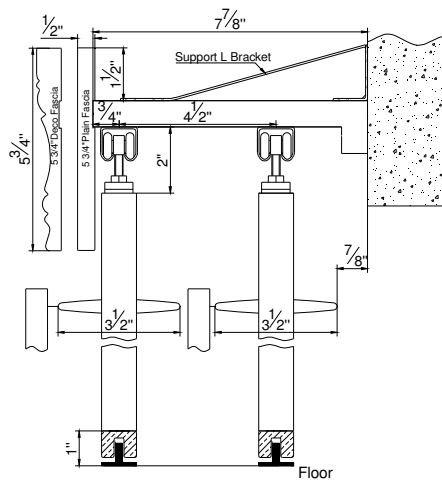
Sussex® Shutters

Track Shutters—Bypass

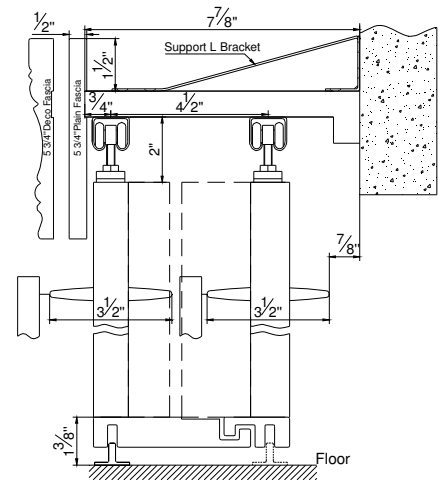
Mounting Options (Opened Bypass)*

- Only available in 2 1/2" and 3 1/2" louver sizes

3 1/2" Louver (Outside Mount)

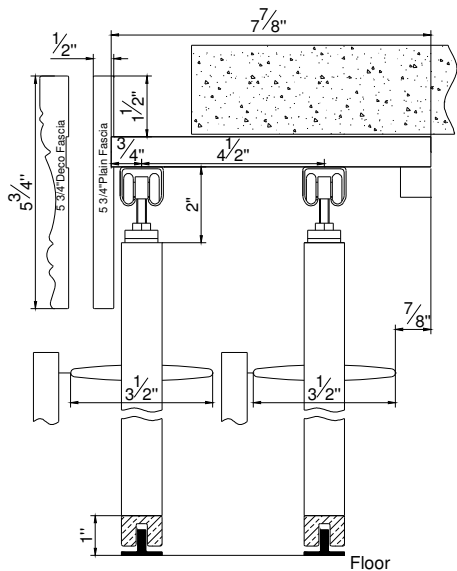


Default Bottom Guide

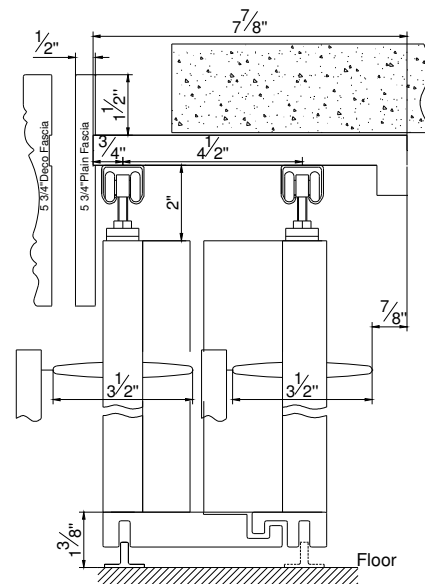


Optional Interlocking Bottom Guide*

3 1/2" Louver (Semi-Inside Mount)



Default Bottom Guide



Optional Interlocking Bottom Guide*

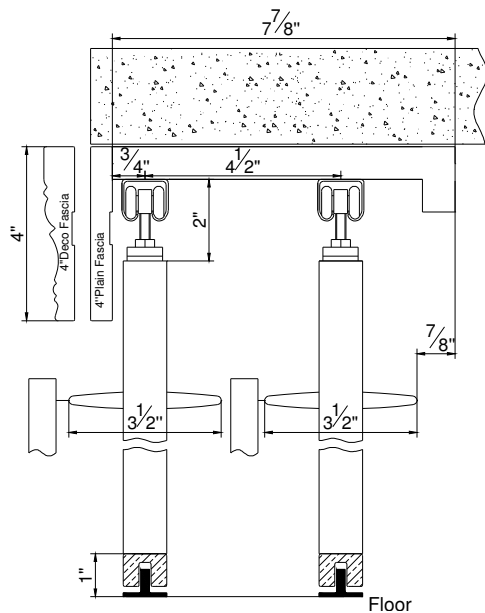
* Surcharge applies. Please see Options and Surcharges page for details

Track Shutters—Bypass

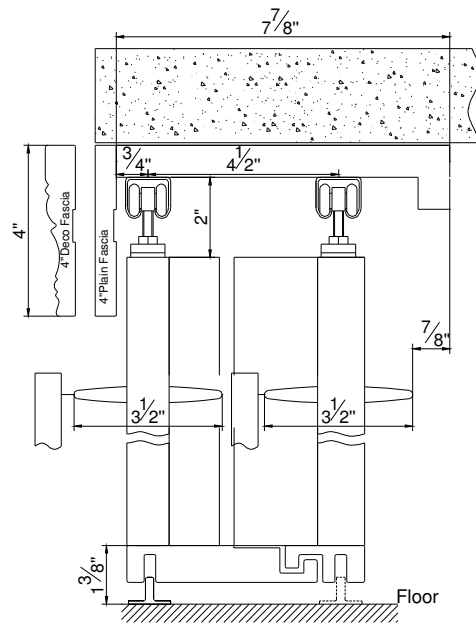
Mounting Options (Opened Bypass)*

- Only available in 2 1/2" and 3 1/2" louver sizes

3 1/2" Louver (Inside Mount)



Default Bottom Guide



Optional Interlocking Bottom Guide*

Sussex® Shutters

Track Shutters—Bypass

Closed Bypass

- Available in all louver sizes



Opened Bypass*

- Available in 2 1/2" and 3 1/2" louver





Track Shutters—Bypass

Track Shutters Framing Materials

Framing	Size				Pc(s)
L Shape Header (2 in 1) Header with Supporting Strip	Header (Closed Bypass)	Header (Opened Bypass)	Supporting Strip		1 pc
	$\frac{3}{4}$ " x $5\frac{1}{2}$ "* (Default for Outside Mount; Optional for Semi-Inside and Inside Mount)	$\frac{3}{4}$ " x $6\frac{1}{4}$ "* ($2\frac{1}{2}$ " Louver)	$\frac{3}{4}$ " x $\frac{3}{4}$ "		
	$\frac{3}{4}$ " x $4\frac{1}{2}$ "* (Default for Semi-Inside and Inside Mount; Optional for Outside Mount)	$\frac{3}{4}$ " x $7\frac{13}{16}$ "* ($3\frac{1}{2}$ " Louver)			
	Custom * ≤ 8 "	Custom * ≤ 8 "			
U Shape Side Frame (3 in 1) Side Frame with Supporting Strip & Side Fascia	Side Frame (Closed Bypass)	Side Frame (Opened Bypass)	Supporting Strip	Side Fascia	2 pcs
	$\frac{3}{4}$ " x $5\frac{1}{2}$ "* (Default for Outside Mount; Optional for Semi-Inside and Inside Mount)	$\frac{3}{4}$ " x $6\frac{1}{4}$ "* ($2\frac{1}{2}$ " Louver)	$\frac{3}{4}$ " x $\frac{3}{4}$ "	$\frac{3}{8}$ " x $1\frac{1}{4}$ "	
	$\frac{3}{4}$ " x $4\frac{1}{2}$ "* (Default for Semi-Inside and Inside Mount; Optional for Outside Mount)	$\frac{3}{4}$ " x $7\frac{13}{16}$ "* ($3\frac{1}{2}$ " Louver)			
	Custom * ≤ 8 "	Custom * ≤ 8 "			
Top Fascia (Plain/Deco)	$5\frac{3}{4}$ " (Semi-inside and Outside Mount) $\frac{1}{2}$ " x 4" (Inside Mount)				1 pc
Top Fascia Return	$5\frac{3}{4}$ " (Semi-inside and Outside Mount) N/A (Inside Mount)				2 pcs

* L Shape Headers and U Shape Side Frames are only available in $3\frac{1}{2}$ ", $4\frac{1}{2}$ ", $5\frac{1}{2}$ ", $6\frac{1}{4}$ " and $7\frac{13}{16}$ ". For other sizes, these framing materials come in separate pieces.

* If framing material in separate pieces is preferred, please state clearly under the Special Instructions section of the order form.

Track Shutters—Bypass

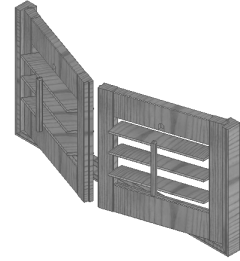
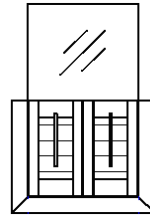
Hardware Box

Hardware Box	
Part	Qty
Wrench	2
Touch up paint	1
Nylon Guide	1 for each overlap
3/4" screws for nylon guide	4 for each Nylon Guide
3/4" screws for support L bracket to header	3 for each Support L Bracket
2 1/2" screws for support L bracket to wall	2 for each Support L Bracket
Support L Bracket (based on the length of header)	Header Length: <ul style="list-style-type: none"> • Less than 90" — 2 brackets included • 90" ~ 120" — 3 brackets included • 120" ~ 150" — 4 brackets included For header length 150" and above, 1 bracket will be added for each additional 30"

Special Options

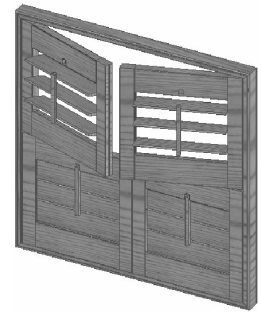
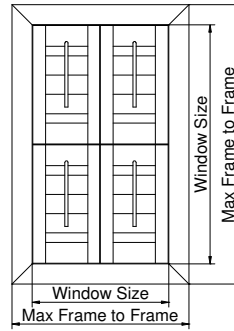
Café Shutters*

- The top of the panel requires a special finish. Please indicate “café shutter” when placing orders.
- The shutter does not come with recessed magnet on top.

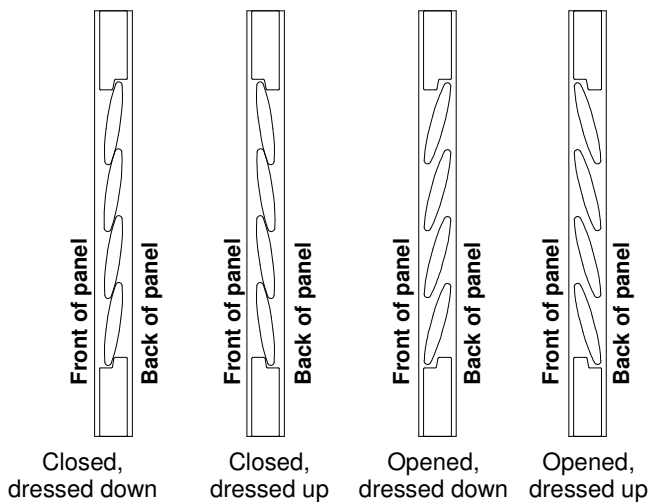
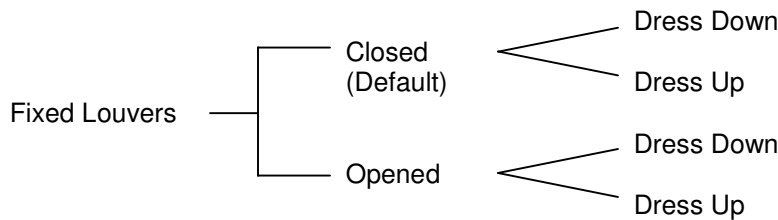


Double-Hung Shutters*

- For total number of panels, please include panels in both rows.
- For panel configuration, please provide panel fold for one row.
- The default location for the division point is the center unless specified otherwise.
- Horizontal T Post* can be added for increased structural integrity.



Fixed Louvers



* Surcharge applies. Please see Options and Surcharges page for details.

Special Options (continued)

Raised Panel *

Available in

- Raised panel with louver combination .
- Raised panel with Natural Expressions™* .
- Raised panel only.

Specifications

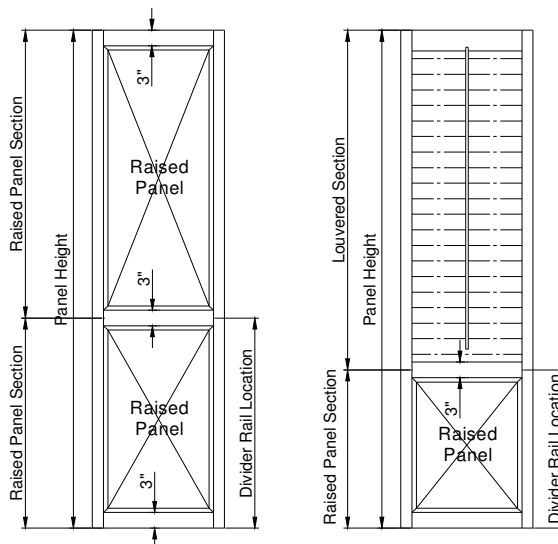
- $12'' \leq$ raised panel section height $\leq 48''$.
- The louvered section cannot exceed 72'' in height.
- If panel exceeds 72'' in height, a divider rail is required.
- The maximum panel height is 133''.

Raised Panel Location(s)

- Top.
- Middle.
- Bottom.
- All (if panel height does not exceed 48'').

Rails

- For a panel with raised panel section only, 3'' is the standard size for top, bottom and divider rails.
- The minimum size for top and bottom rails is 3''.
- If you are matching raised panels to standard shutter panels, the top rail of the standard shutter panel will match the top rail of the raised panel. Please specify clearly when placing order.



* Surcharge applies. Please see Options and Surcharges page for details.

Special Options (continued)

Hand-Carved Rail *

- Available for top and/or bottom rails.
- Please note that the proportion of the design is based on the height of the rail, not the width of the panel.



Vine



Wheat



Rosette



Star



Fish



Swan

Sussex® Shutters

Special Options (continued)

Natural Expressions™ *

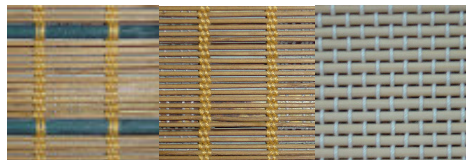
- Available in both stain and solid colors.
- Natural Expressions inserts can be combined with louvers just like raised panels*.
- The maximum size for Natural Expressions insert sections is 72".
- Natural Expressions is also available for all specialty shutters with sunburst louvers, with the options of:
 - ◇ Natural Expressions on *alternate* sunburst louvers
 - ◇ Natural Expressions on *all* sunburst louvers



NE001
Jamaica

NE002
Tahiti

NE003
Barbados



NE004
Fiji

NE005
Maui

NE006
Kauai



Natural Expressions™
sunburst specialty*

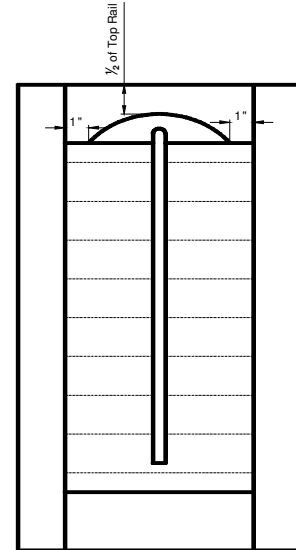


* Surcharge applies. Please see Options and Surcharges page for details.

Special Options (continued)

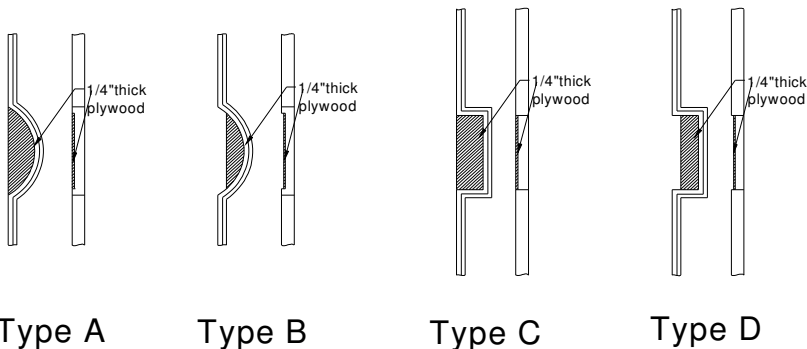
Liberty Arch *

- The arch starts and ends 1" from the rail sides.
- The arch height is half of the top rail size (rounded up to $\frac{1}{8}$ " increment).
- The shape of the Arch is based on 3 points taken from the rail.
 - 1st point: 1" from the left stile
 - 2nd point: 1" from the right stile
 - 3rd point: Midpoint of the rail front



French-Door Contour Collection *

- Flush and offset cutout options are available in both curved and square French door cutout.
 - ◊ Offset cutout is a good option for French Door with molding around the glass.
- All French door cutouts are only available in L frame.
- For measurement details please refer to forms section.



Type A

Type B

Type C

Type D

Sussex® Shutters

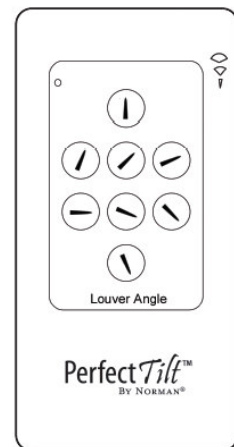
Special Options (continued)

Custom Colors *

- Custom colors, both solids and stains, are available in Sussex.
- We will only be able to match the tone and not the texture or finish of the color sample you send in.
- All custom colors will only be finished with the STANDARD GLOSS used on all Norman Shutters products.
- We do not offer custom color matching on any hardware or accessories finish such as hinges, hidden tilt rod or magnets.
- Color sample
 - Solid
 - Choose from Sherwin-Williams® Color™ (#657-2846 CS 4/06) or Benjamin Moore® Classic Colors® (# /M5900010).
 - Or send us a color sample at least 2" x 2" in size of your desired solid color.
 - Stain
 - Send in a color sample at least 2" x 2" in size of your desired stain.
- Please see Custom Color Policy for details.

PerfectTilt® *

- Battery operated motor and remote control
 - No expensive and invasive hardwiring required
 - No unsightly cord and plug needed
- Sleek and easy to use wireless remote control
 - Pre-set angle remote buttons, plus minor adjustment, for maximum convenience
 - Complete light and privacy control



Disclaimer:

Sherwin-William, Sherwin-William Color, Benjamin Moore, Benjamin Moore Classic Colors are registered trademarks or trademarks of their respective owners. All other trademarks mentioned herein are the property of Norman International, Inc. and/or its affiliates in the U.S. and certain other countries. Reference herein to the commercial products or service of others by trade name, trademark, manufacturer, or otherwise, does not necessarily constitute or imply its endorsement.

* Surcharge applies. Please see Options and Surcharges page for details.

0609 SU k-6

Sussex® Shutters

Pricing

1) By Max Frame-to-Frame Measurement:					
Regular Shutter					
Inside and Outside Mount	Width	x	Height	/ 144	x \$/sq ft
Track Shutter**					
Inside	Width	x	Height	/ 144	x \$/sq ft
Semi-Inside and Outside Mount	Width	x	(Height-1½")	/ 144	x \$/sq ft
2) By Net Panel Measurement:					
	Width	x	Height	/ 144	x \$/sq ft
3) By Window Size:					
2" Camber Deco Frame 2" Classic Deco Frame	4-sided	(Width+4")	x	(Height+4")	/ 144 x \$/sq ft
	3-sided with Deco Sill Frame	(Width+4")	x	(Height+5")	/ 144 x \$/sq ft
	3-sided with Designer Sill Cap	(Width+4")	x	(Height+8")	/ 144 x \$/sq ft
	3-sided with Sill Plate	(Width+4")	x	(Height+4")	/ 144 x \$/sq ft
	3-sided	(Width+4")	x	(Height+2")	/ 144 x \$/sq ft
	2-sided with Deco Sill Frame	(Width+4")	x	(Height+3")	/ 144 x \$/sq ft
	2-sided with Designer Sill Cap	(Width+4")	x	(Height+6")	/ 144 x \$/sq ft
	2-sided with Sill Plate	(Width+4")	x	(Height+2")	/ 144 x \$/sq ft
3" Ridge Deco Frame	4-sided	(Width+6")	x	(Height+6")	/ 144 x \$/sq ft
	3-sided with Deco Sill Frame	(Width+6")	x	(Height+6")	/ 144 x \$/sq ft
	3-sided with Designer Sill Cap	(Width+6")	x	(Height+9")	/ 144 x \$/sq ft
	3-sided with Sill Plate	(Width+6")	x	(Height+6")	/ 144 x \$/sq ft
	3-sided	(Width+6")	x	(Height+3")	/ 144 x \$/sq ft
	2-sided with Deco Sill Frame	(Width+6")	x	(Height+3")	/ 144 x \$/sq ft
	2-sided with Designer Sill Cap	(Width+6")	x	(Height+6")	/ 144 x \$/sq ft
	2-sided with Sill Plate	(Width+6")	x	(Height+3")	/ 144 x \$/sq ft
3" Crown Z Frame	4-sided	(Width+4 ½")	x	(Height+4½")	/ 144 x \$/sq ft
	3-sided with Deco Sill Frame	(Width+4 ½")	x	(Height+5¼")	/ 144 x \$/sq ft
	3-sided with Designer Sill Cap	(Width+4 ½")	x	(Height+8¼")	/ 144 x \$/sq ft
	3-sided with Sill Plate	(Width+4 ½")	x	(Height+4½")	/ 144 x \$/sq ft
	3-sided	(Width+4 ½")	x	(Height+2¼")	/ 144 x \$/sq ft
	2-sided with Deco Sill Frame	(Width+4 ½")	x	(Height+3")	/ 144 x \$/sq ft
	2-sided with Designer Sill Cap	(Width+4 ½")	x	(Height+6")	/ 144 x \$/sq ft
	2-sided with Sill Plate	(Width+4 ½")	x	(Height+2¼")	/ 144 x \$/sq ft
2-sided	(Width+4 ½")	x	(Height)	/ 144 x \$/sq ft	

*This table is for pricing use only.

**Surcharge for tracks and boxout are not included.

Sussex® Shutters

Pricing

2" Bel Air Z Frame	4-sided	(Width+2 1/2")	x	(Height+2 1/2")	/ 144	x	\$/sq ft
	3-sided with Deco Sill Frame	(Width+2 1/2")	x	(Height+4 1/4")	/ 144	x	\$/sq ft
	3-sided with Designer Sill Cap	(Width+2 1/2")	x	(Height+7 1/4")	/ 144	x	\$/sq ft
	3-sided with Sill Plate	(Width+2 1/2")	x	(Height+2 1/2")	/ 144	x	\$/sq ft
	3-sided	(Width+2 1/2")	x	(Height+1 1/4")	/ 144	x	\$/sq ft
	2-sided with Deco Sill Frame	(Width+2 1/2")	x	(Height+3")	/ 144	x	\$/sq ft
	2-sided with Designer Sill Cap	(Width+2 1/2")	x	(Height+6")	/ 144	x	\$/sq ft
	2-sided with Sill Plate	(Width+2 1/2")	x	(Height+1 1/4")	/ 144	x	\$/sq ft
	2-sided	(Width+2 1/2")	x	(Height)	/ 144	x	\$/sq ft
1 1/2" Bullnose Z Frame/ 1 1/4" Beaded Z Frame/ Bullnose Tilt Out Z Frame	4-sided	(Width+2")	x	(Height+2")	/ 144	x	\$/sq ft
	3-sided with Deco Sill Frame	(Width+2")	x	(Height+4")	/ 144	x	\$/sq ft
	3-sided with Designer Sill Cap	(Width+2")	x	(Height+7")	/ 144	x	\$/sq ft
	3-sided with Sill Plate (N/A w/ Tilt out Z)	(Width+2")	x	(Height+2")	/ 144	x	\$/sq ft
	3-sided	(Width+2")	x	(Height+1")	/ 144	x	\$/sq ft
	2-sided with Deco Sill Frame	(Width+2")	x	(Height+3")	/ 144	x	\$/sq ft
	2-sided with Designer Sill Cap	(Width+2")	x	(Height+6")	/ 144	x	\$/sq ft
	2-sided with Sill Plate (N/A w/ Tilt out Z)	(Width+2")	x	(Height+1")	/ 144	x	\$/sq ft
	2-sided	(Width+2")	x	(Height)	/ 144	x	\$/sq ft
Vintage Hang Strip	Inside	Width	x	Height	/ 144	x	\$/sq ft
	Outside 4-sided	(Width+3")	x	(Height+3")	/ 144	x	\$/sq ft
	Outside 3-sided with Deco Sill Frame	(Width+3")	x	(Height+4 1/2")	/ 144	x	\$/sq ft
	Outside 3-sided with Designer Sill Cap	(Width+3")	x	(Height+7 1/2")	/ 144	x	\$/sq ft
	Outside 3-sided	(Width+3")	x	(Height+1 1/2")	/ 144	x	\$/sq ft
	Outside 2-sided with Deco Sill Frame	(Width+3")	x	(Height+3")	/ 144	x	\$/sq ft
	Outside 2-sided with Designer Sill Cap	(Width+3")	x	(Height+6")	/ 144	x	\$/sq ft
	Outside 2-sided	(Width+3")	x	(Height)	/ 144	x	\$/sq ft
Vintage L Frame/ Beaded L Frame/ Colonial L Frame/ Bullnose L Frame/ Rope L Frame	Inside (max frame to frame measurement only)	Width	x	Height	/ 144	x	\$/sq ft
	Outside 4-sided	(Width+3")	x	(Height+3")	/ 144	x	\$/sq ft
	Outside 3-sided with Deco Sill Frame	(Width+3")	x	(Height+4 1/2")	/ 144	x	\$/sq ft
	Outside 3-sided with Designer Sill Cap	(Width+3")	x	(Height+7 1/2")	/ 144	x	\$/sq ft
	Outside 3-sided	(Width+3")	x	(Height+1 1/2")	/ 144	x	\$/sq ft
	Outside 2-sided with Deco Sill Frame	(Width+3")	x	(Height+3")	/ 144	x	\$/sq ft
	Outside 2-sided with Designer Sill Cap	(Width+3")	x	(Height+6")	/ 144	x	\$/sq ft
	Outside 2-sided	(Width+3")	x	(Height)	/ 144	x	\$/sq ft
Track Shutter**							
Inside and Semi-Inside Mount	Width	x	Height	/144	x	\$/sq ft	
Outside Mount	(Width+3")	x	(Height+3")	/144	x	\$/sq ft	

*This table is for pricing use only.

**Surcharge for tracks and boxout are not included.



Options & Surcharges

Option	Surcharge	Remark
1¼" Colonial Louver	10%	
1⅝" Louver	10%	
S Shape Louver	10%	
Rope L Frame	5%	
Beaded L Frame with ¼" Thick Light Block	No surcharge	
L Frame with ½" & 1" Buildout	5%	
Notch Out L Frame	10%	
Deco Frame with ½", 1" & 1½" Extension	5%	
Custom Extension	10%	Up to 2" for L Frames, Deco Frames and Hang Strip (OM) Up to 1" for Z Frames (not available for Tilt Out Z frame)
T Post	No surcharge	
T Post Extension	5%	Up to 2"
Custom width T Post	5%	Up to 7½"
90 degree Corner Post & 135 degree Bay Post	No surcharge	
Double Hung / Horizontal 1¼" T Post	10%	
Custom Angle/Depth Bay Post	5%	Up to 2" for custom depth
Extra Light Block	Charge per linear ft	Please contact your Customer Account Specialist for details
Scribe Trim	Charge per linear ft	Please contact your Customer Account Specialist for details
Center Tilt Rod	No surcharge	
Offset Tilt Rod	5%	
Hidden Tilt Rod	10%	Hidden tilt rod will be split should panel height exceed 48". Not available for 1¼" Colonial Louver or 1⅝" louvers.
Café Shutters	30%	Surcharge applies when the frame exceeds 5" beyond the top of the panel.
Sandblasted Finish	No surcharge	
Hand Carved Rail	\$10/rail	
Raised Panel	See specialty surcharge	Please contact your Customer Account Specialist for details
Fixed Louver Panel	No surcharge	Please indicate fixed position: up/down and open/close
Natural Expressions™ Panel	10%	
Natural Expressions™ Specialties	10%	
French Door Cutout	See specialty surcharge	Please contact your Customer Account Specialist for details
Track	See specialty surcharge	Please contact your Customer Account Specialist for details
Plain Boxout (Standard size)	20%	
Deco Boxout (Standard size)	25%	
Plain Boxout (Custom size)	30%	
Deco Boxout (Custom size)	35%	
Interlocking Bottom Guide (Opened Bypass)	5%	
Liberty Arch	\$ 30/panel	
Specialties	See specialty surcharge	Please contact your Customer Account Specialist for details
Stainless Steel Hinges	3%	
Custom Color	\$150 per Color per Order	Please contact your Custom Account Specialist for details
PerfectTilt (regular)	Per motor, per remote control	Please contact your Custom Account Specialist for details
PerfectTilt (solar)	Per motor, per remote control	Please contact your Custom Account Specialist for details

Appendix

Color Coordination Chart (Solid)

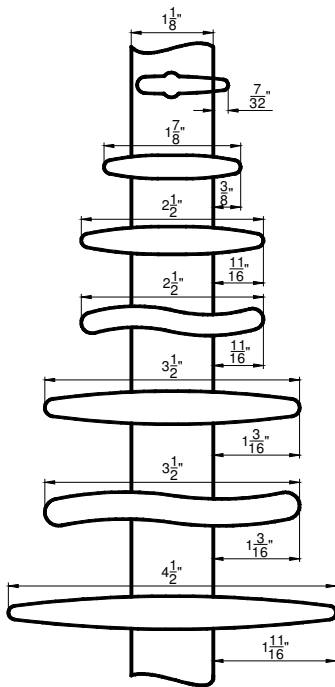
Code	Sussex Solid	Hinge	Hidden Tilt Rod
001	Pure White	Silk White	Silk White
002	Extra White	Silk White	Silk White
003	Silk White	Silk White	Silk White
004	Bright White	Silk White	Silk White
005	Moderne White	Silk White	Silk White
006	Pearl	Pearl	Pearl
007	Ivory Lace	Pearl	Pearl
008	Marshmallow	Pearl	Pearl
009	Creamy	Bisque	Bisque
010	Dover White	Bisque	Bisque
011	Cameo	Bisque	Bisque
012	Crisp Linen	Bisque	Bisque
013	Bisque	Bisque	Bisque
014	Alabaster	Bisque	Bisque
015	Ecru	Bisque	Bisque
016	Butter	Bisque	Bisque
019	String	Bisque	Bisque
020	Black	Black	Silver

Color Coordination Chart (Stains)

Code	Sussex Stain	Hinge Color	Hidden Tilt Rod Color
100	Pearwood	Antique Brass	Silver
101	Banister Beige	Antique Brass	Silver
102	Winter White	Antique Brass	Silver
103	Maple Sugar	Antique Brass	Silver
104	Tuscan Rose	Antique Brass	Silver
105	Hermitage Green	Antique Brass	Silver
106	Provence Blue	Antique Brass	Silver
107	Beechwood	Antique Brass	Silver
108	Rustic Gray	Antique Brass	Silver
109	Weathered Teak	Antique Brass	Silver
200	Natural	Antique Brass	Silver
201	Honey	Antique Brass	Silver
202	Golden Oak	Antique Brass	Silver
203	Autumn Maple	Antique Brass	Silver
204	Oak Mantel	Antique Brass	Silver
205	Goldenrod	Antique Brass	Silver
206	Pecan	Antique Brass	Silver
207	Nutmeg	Antique Brass	Silver
208	Warm Chestnut	Antique Brass	Silver
209	Bright Cherry	Antique Brass	Silver
210	Orangewood	Antique Brass	Silver
211	Cherry	Antique Brass	Silver
212	Dark Teak	Antique Brass	Silver
213	Armoire Hickory	Antique Brass	Silver
214	Cocoa	Antique Brass	Silver
215	Cordovan	Antique Brass	Silver
216	Rosewood	Antique Brass	Silver
217	Paprika	Antique Brass	Silver
218	Plum Mahogany	Antique Brass	Silver
219	Mahogany	Antique Brass	Silver
220	New Ebony	Antique Brass	Silver
221	Black Walnut	Antique Brass	Silver

Louver Depth Clearance

Standard Tilt Rod

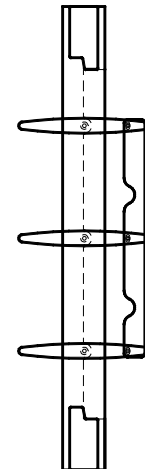
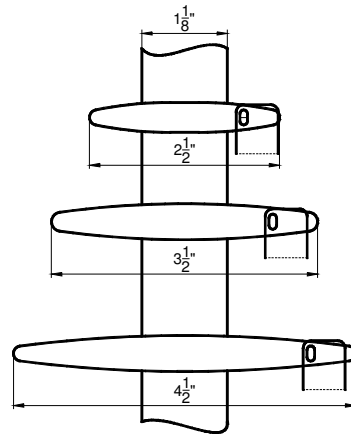


Offset Tilt Rod



Hidden Tilt Rod

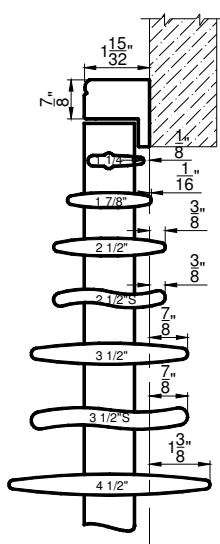
Hidden tilt rod does not project beyond the louver.



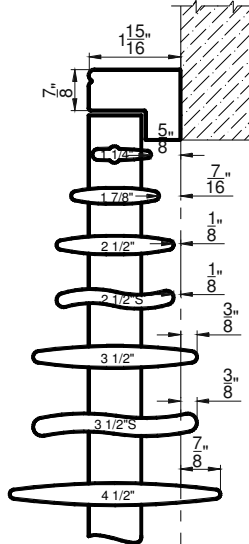
Sussex® Shutters

Louver Depth Clearance For Specific Frames

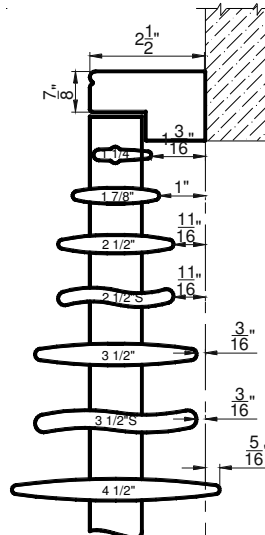
Louver Depth Clearance for
 • Offset tilt rod, add 1"



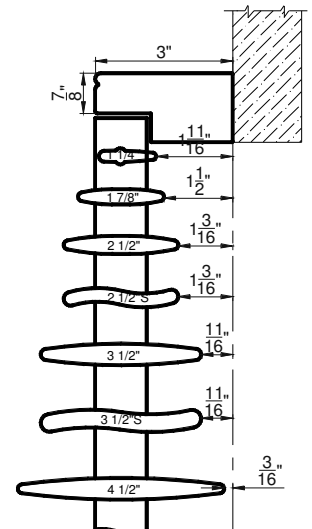
L Frame
w/ 1/4" Light Block



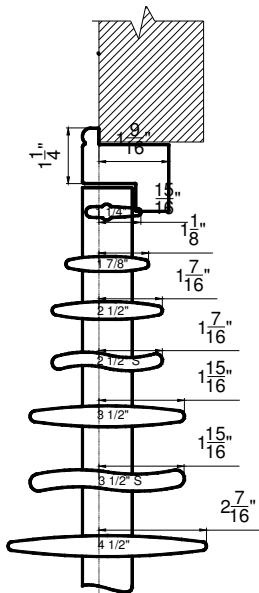
L Frame



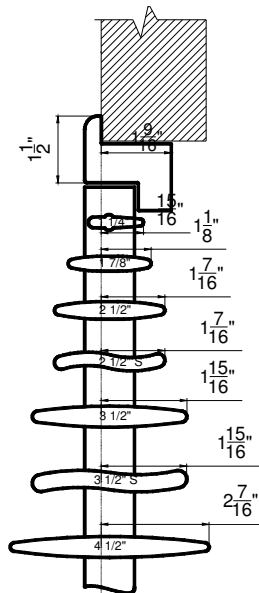
L Frame
w/ 1/2" Buildout



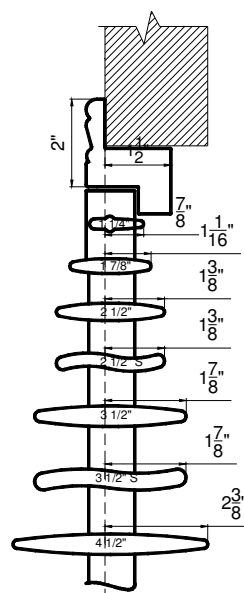
L Frame
w/ 1" Buildout



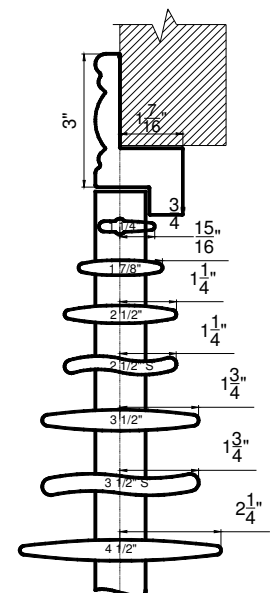
1 1/4" Beaded Z Frame



1 1/2" Bullnose Z Frame



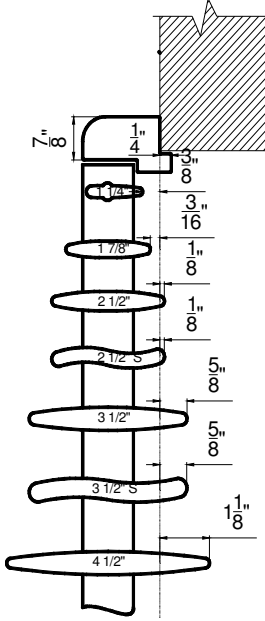
2" Bel Air Z Frame



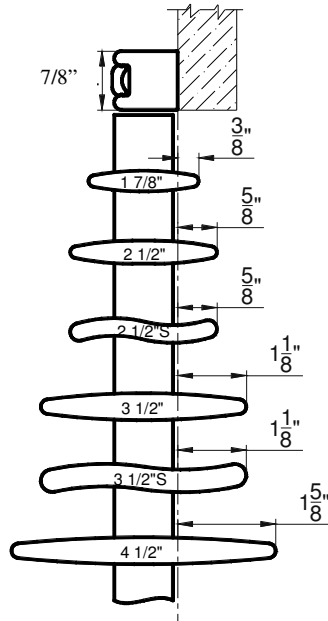
3" Crown Z Frame

Sussex® Shutters

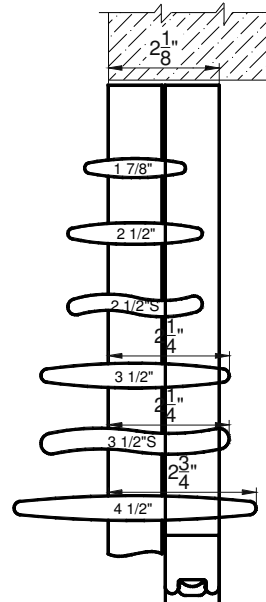
Louver Depth Clearance For Specific Frames



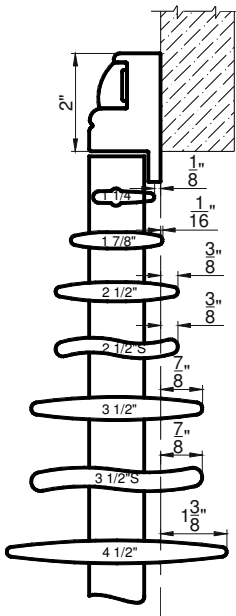
Bullnose
Tilt Out Z Frame



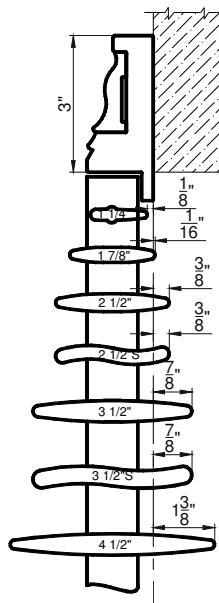
Hang Strip
(beside the panel)



Hang Strip
(behind the panel)



2" Camber Deco Frame



3" Ridge Deco Frame

Appendix

Color Coordination Chart (Solid)

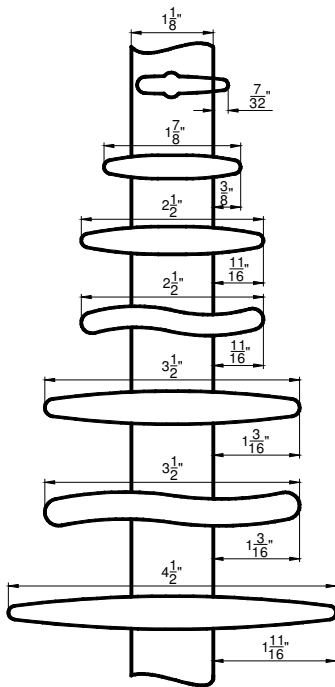
Code	Sussex Solid	Hinge	Hidden Tilt Rod
001	Pure White	Silk White	Silk White
002	Extra White	Silk White	Silk White
003	Silk White	Silk White	Silk White
004	Bright White	Silk White	Silk White
005	Moderne White	Silk White	Silk White
006	Pearl	Pearl	Pearl
007	Ivory Lace	Pearl	Pearl
008	Marshmallow	Pearl	Pearl
009	Creamy	Bisque	Bisque
010	Dover White	Bisque	Bisque
011	Cameo	Bisque	Bisque
012	Crisp Linen	Bisque	Bisque
013	Bisque	Bisque	Bisque
014	Alabaster	Bisque	Bisque
015	Ecru	Bisque	Bisque
016	Butter	Bisque	Bisque
019	String	Bisque	Bisque
020	Black	Black	Silver

Color Coordination Chart (Stains)

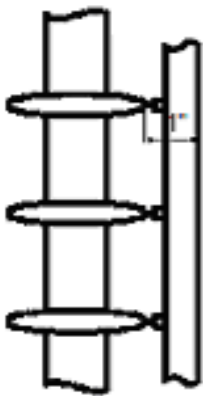
Code	Sussex Stain	Hinge Color	Hidden Tilt Rod Color
100	Pearwood	Antique Brass	Silver
101	Banister Beige	Antique Brass	Silver
102	Winter White	Antique Brass	Silver
103	Maple Sugar	Antique Brass	Silver
104	Tuscan Rose	Antique Brass	Silver
105	Hermitage Green	Antique Brass	Silver
106	Provence Blue	Antique Brass	Silver
107	Beechwood	Antique Brass	Silver
108	Rustic Gray	Antique Brass	Silver
109	Weathered Teak	Antique Brass	Silver
200	Natural	Antique Brass	Silver
201	Honey	Antique Brass	Silver
202	Golden Oak	Antique Brass	Silver
203	Autumn Maple	Antique Brass	Silver
204	Oak Mantel	Antique Brass	Silver
205	Goldenrod	Antique Brass	Silver
206	Pecan	Antique Brass	Silver
207	Nutmeg	Antique Brass	Silver
208	Warm Chestnut	Antique Brass	Silver
209	Bright Cherry	Antique Brass	Silver
210	Orangewood	Antique Brass	Silver
211	Cherry	Antique Brass	Silver
212	Dark Teak	Antique Brass	Silver
213	Armoire Hickory	Antique Brass	Silver
214	Cocoa	Antique Brass	Silver
215	Cordovan	Antique Brass	Silver
216	Rosewood	Antique Brass	Silver
217	Paprika	Antique Brass	Silver
218	Plum Mahogany	Antique Brass	Silver
219	Mahogany	Antique Brass	Silver
220	New Ebony	Antique Brass	Silver
221	Black Walnut	Antique Brass	Silver

Louver Depth Clearance

Standard Tilt Rod

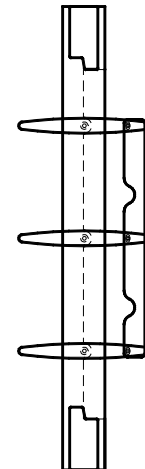
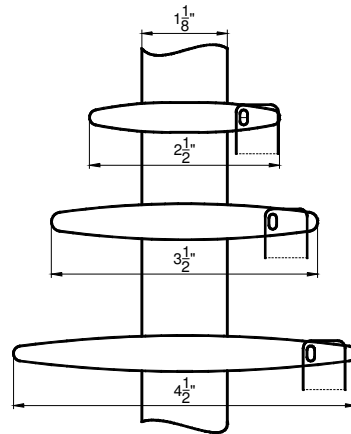


Offset Tilt Rod



Hidden Tilt Rod

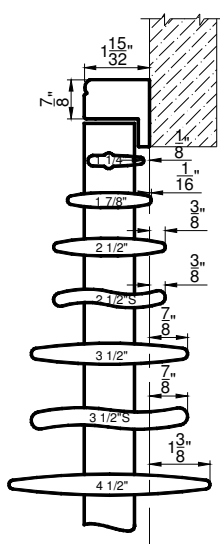
Hidden tilt rod does not project beyond the louver.



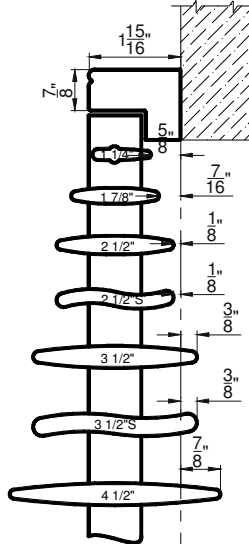
Sussex® Shutters

Louver Depth Clearance For Specific Frames

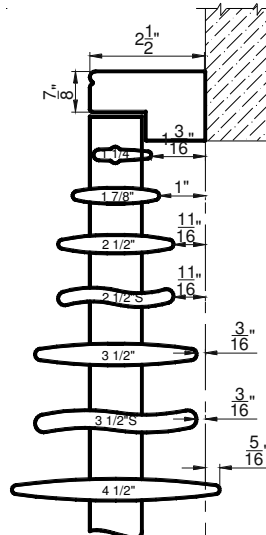
Louver Depth Clearance for
 • Offset tilt rod, add 1"



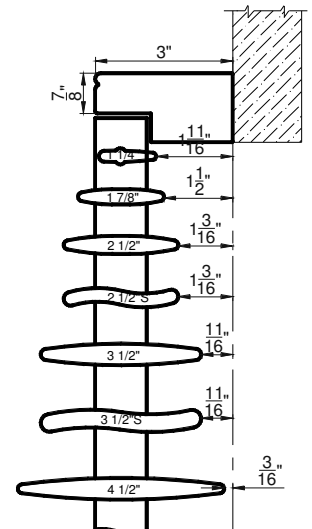
L Frame
w/ 1/4" Light Block



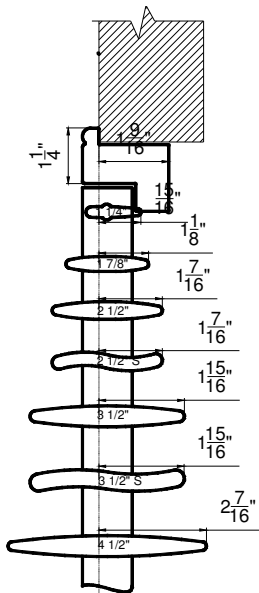
L Frame



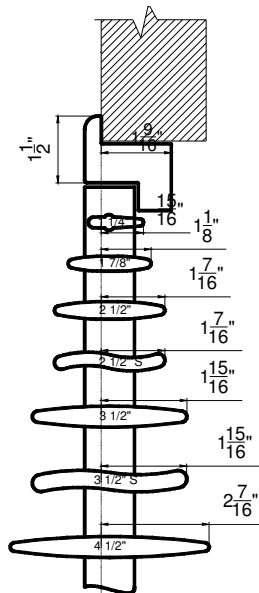
L Frame
w/ 1/2" Buildout



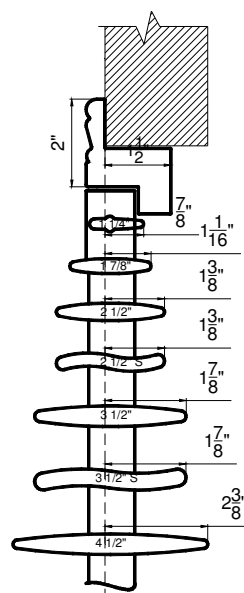
L Frame
w/ 1" Buildout



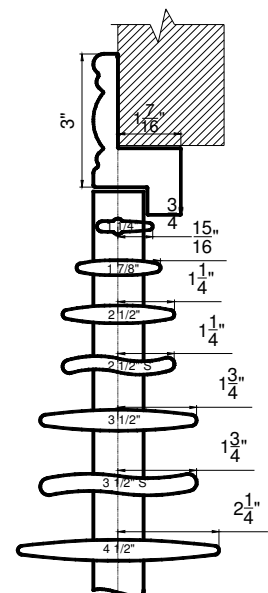
1 1/4" Beaded Z Frame



1 1/2" Bullnose Z Frame



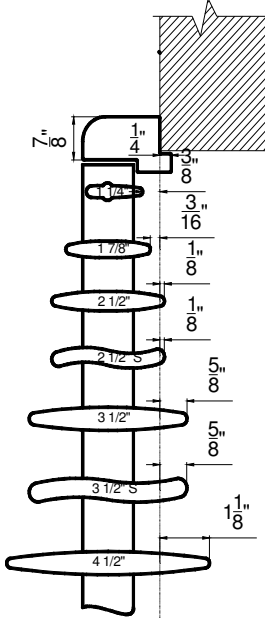
2" Bel Air Z Frame



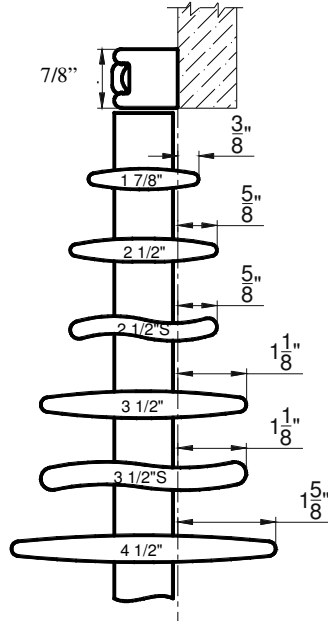
3" Crown Z Frame

Sussex® Shutters

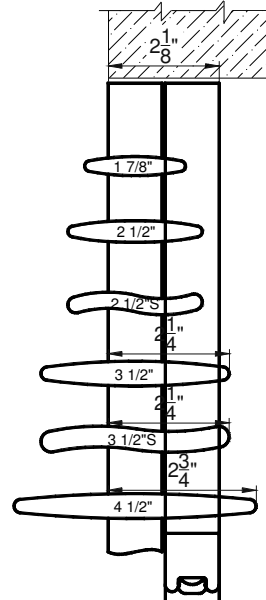
Louver Depth Clearance For Specific Frames



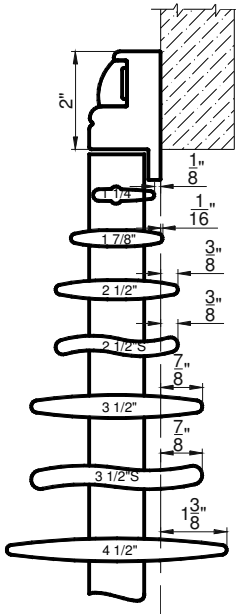
Bullnose
Tilt Out Z Frame



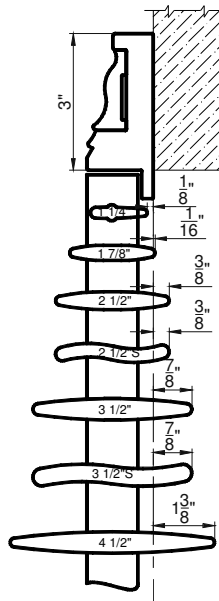
Hang Strip
(beside the panel)



Hang Strip
(behind the panel)



2" Camber Deco Frame



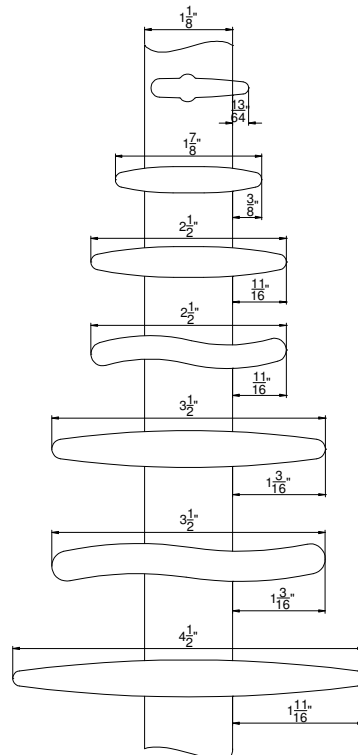
3" Ridge Deco Frame

Sussex® Shutters

Colors & Louvers

Solid		Stain	
001 Pure White	010 Dover White	100 Pearwood	206 Pecan
002 Extra White	011 Cameo	101 Banister Beige	207 Nutmeg
003 Silk White	012 Crisp Linen	102 Winter White	208 Warm Chestnut
004 Bright White	013 Bisque	103 Maple Sugar	209 Bright Cherry
005 Moderne White	014 Alabaster	104 Tuscan Rose	210 Orangewood
006 Pearl	015 Ecru	105 Hermitage Green	211 Cherry
007 Ivory Lace	016 Butter	106 Provence Blue	212 Dark Teak
008 Marshmallow	019 String	107 Beechwood	213 Armoire Hickory
009 Creamy	020 Black	108 Rustic Gray	214 Cocoa
		109 Weathered Teak	215 Cordovan
		200 Natural	216 Rosewood
		201 Honey	217 Paprika
		202 Golden Oak	218 Plum Mahogany
		203 Autumn Maple	219 Mahogany
		204 Oak Mantel	220 New Ebony
		205 Goldenrod	221 Black Walnut
Louver			
Colonial*	1 ¼"		
Elliptical	1 7/8"♦*		
	2 ½"♦		
	3 ½"♦		
	4 ½"♦		
S Shape*	2 ½"♦		
	3 ½"♦		

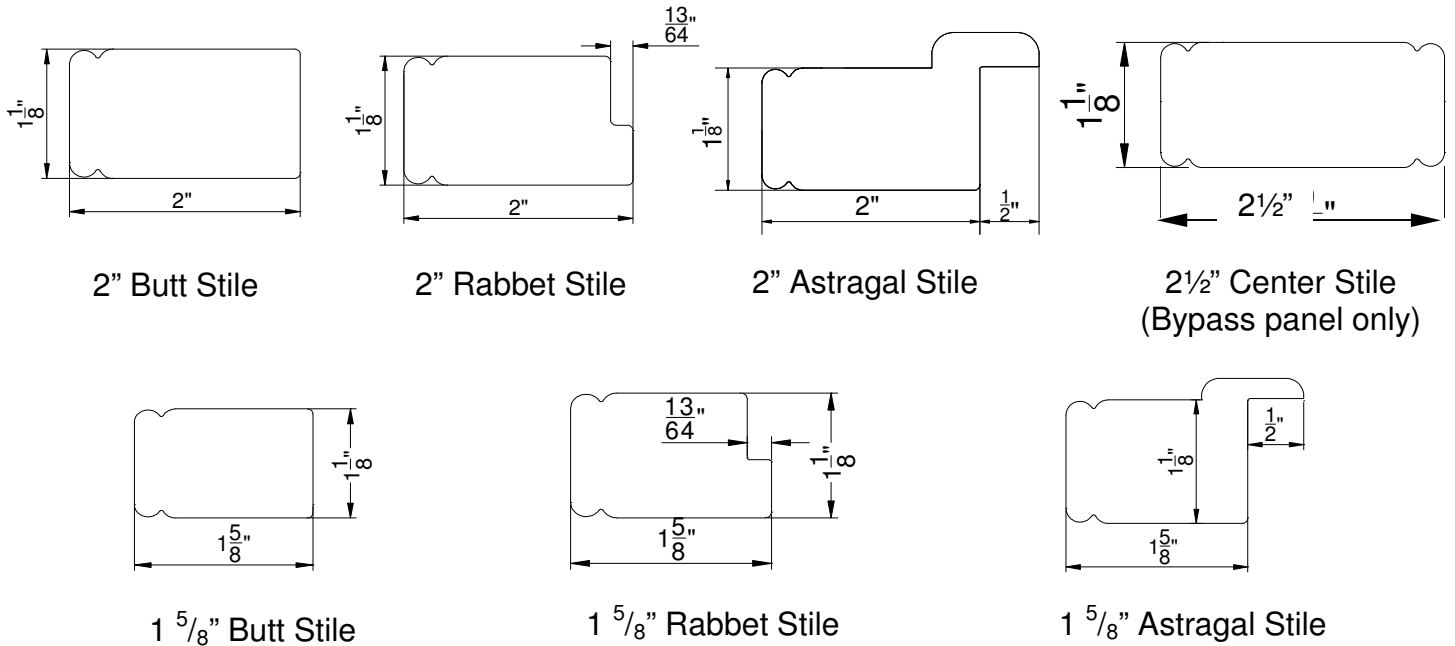
* Sandblasted finish is also available for 1 7/8", 2 ½", 3 ½" and 4 ½" louver sizes.



* Surcharge applies. Please see Options and Surcharges page for details.

Stiles

Options



Stile between panel closure

Single panel

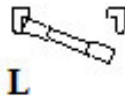
- Butt stile only
 - 1 5/8" (default for 1 1/4" louver; optional for panel width ≤ 12")
 - 2" (default)

2 panels or more

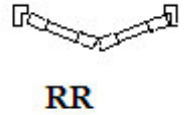
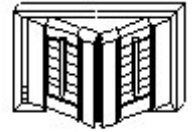
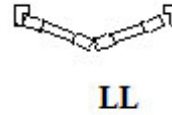
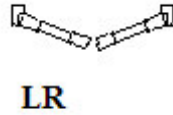
- Rabbet stile
 - 1 5/8" (optional for panel width ≤ 12")
 - 2" (default)
- Astragal stile
 - 1 5/8" (optional for panel width ≤ 12")
 - 2" (optional)

Panel Configurations

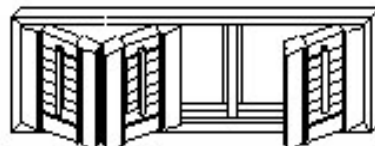
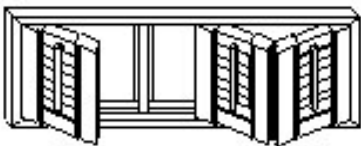
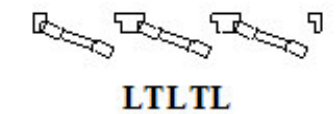
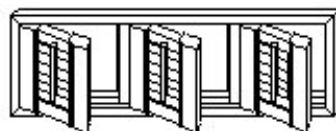
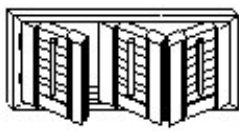
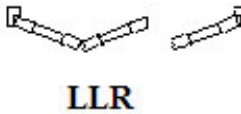
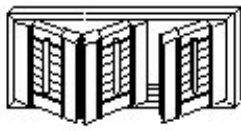
Single Panel



Two Panels



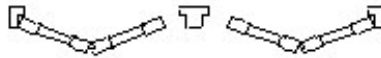
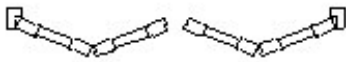
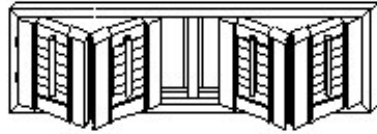
Three Panels



Sussex® Shutters

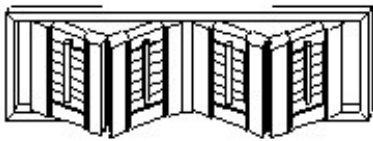
Panel Configurations (continued)

Four Panels



LLRR

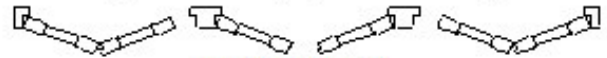
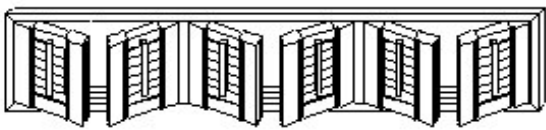
LLTRR



RRILL

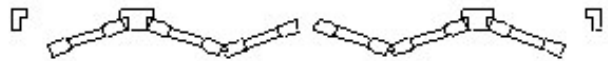
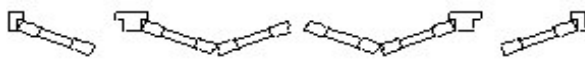
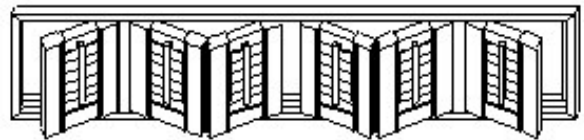
LTLRTR

Six Panels



LRTLRTL

LLTLRTR

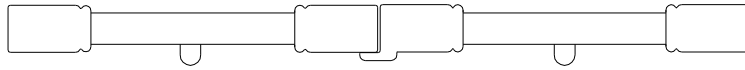


LTLRRTL

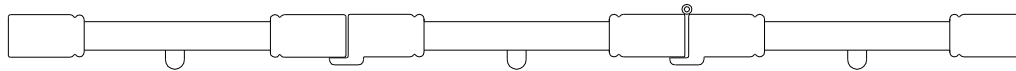
RTLLRRTL

Panel Configurations —Astragal stile

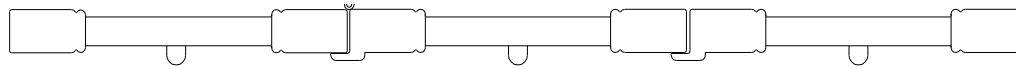
◇ 2 Panels – LR



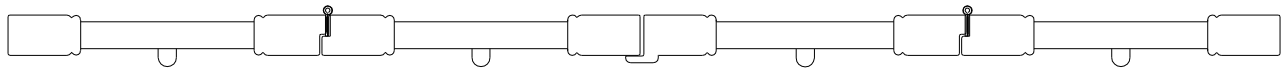
◇ 3 Panels - LRR



◇ 3 Panels – LLR



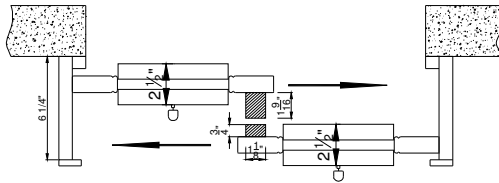
◇ 4 Panels - LLRR



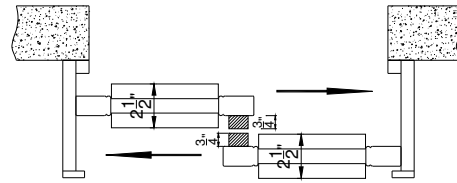
Sussex® Shutters

Panel Configurations — Open Bypass

2 1/2" Louver

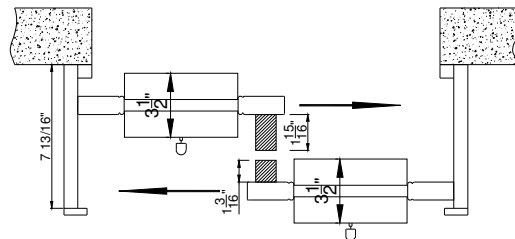


Regular Tilt Rod

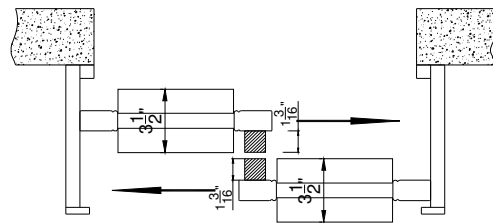


Hidden Tilt Rod

3 1/2" Louver



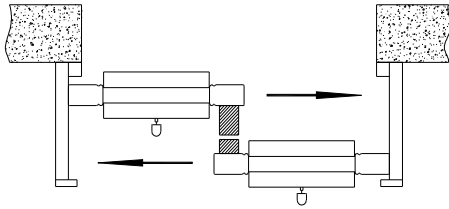
Regular Tilt Rod



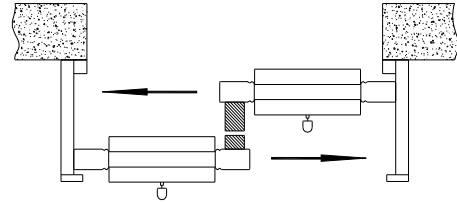
Hidden Tilt Rod

Sussex® Shutters

2 panels

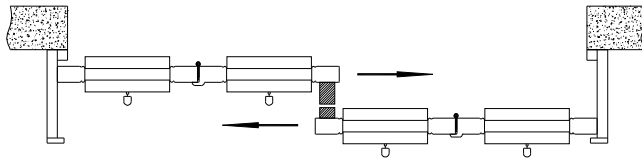


Side Open -- Right over Left

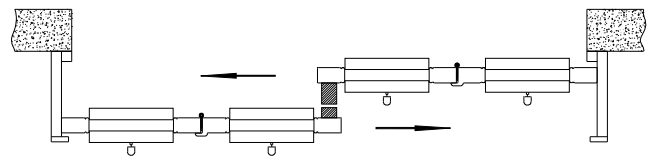


Side Open -- Left over Right

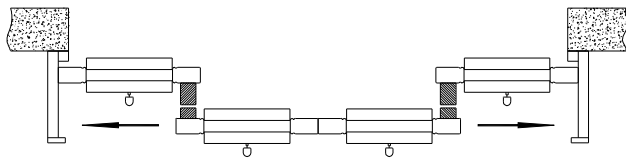
4 panels



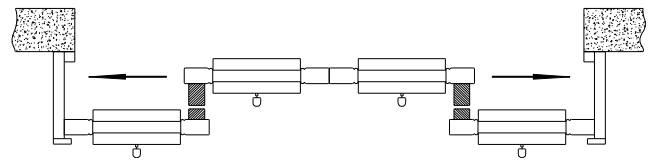
Side Open -- Right over Left



Side Open -- Left over Right



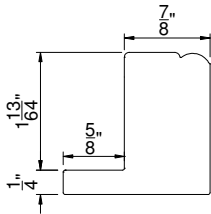
Center Open -- Front



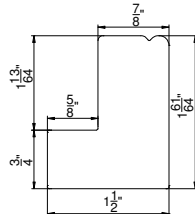
Center Open -- Back

Frame Styles

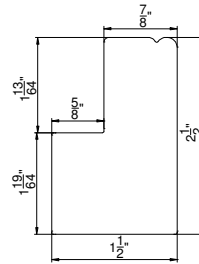
Beaded L Frame
w/ 1/4" Thick Light Block



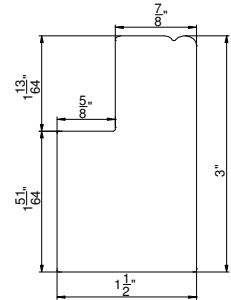
Beaded L Frame



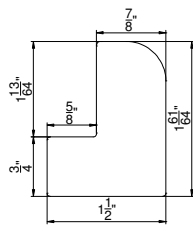
Beaded L Frame
w/ 1/2" Buildout*



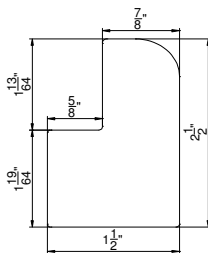
Beaded L Frame
w/ 1" Buildout*



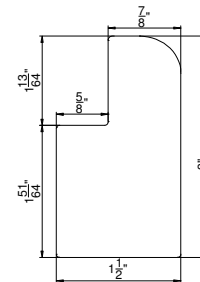
Bullnose L



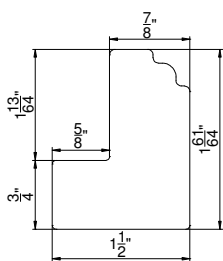
Bullnose L Frame
w/ 1/2" Buildout*



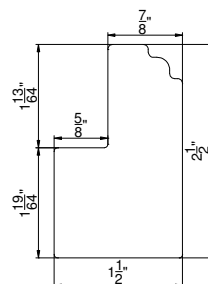
Bullnose L Frame
w/ 1" Buildout*



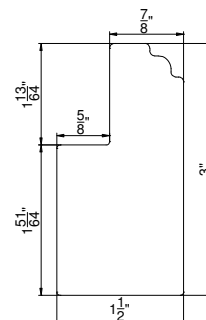
Colonial L Frame



Colonial L Frame
w/ 1/2" Buildout*



Colonial L Frame
w/ 1" Buildout*



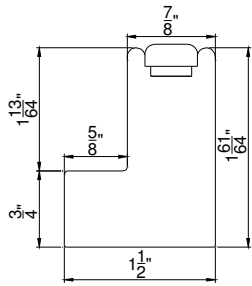
Also available

- Custom extensions* up to 2" for L frames

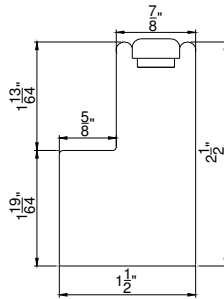
* Surcharge applies. Please see Options and Surcharges page for details.

Frame Styles (continued)

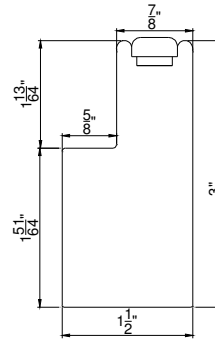
Vintage L Frame



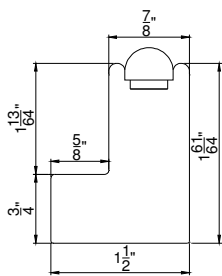
Vintage L Frame w/ 1/2" Buildout*



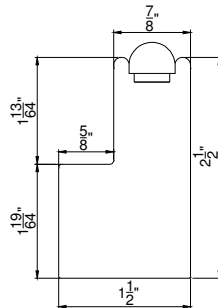
Vintage L Frame w/ 1" Buildout*



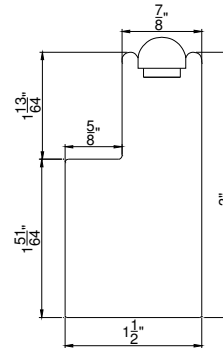
Rope L Frame*



Rope L Frame w/ 1/2" Buildout*



Rope L Frame w/ 1" Buildout*



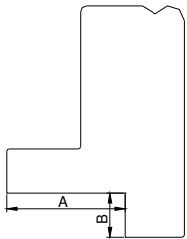
Also available

- o Custom extensions* up to 2" for L frames

* Surcharge applies. Please see Options and Surcharges page for details.

Frame Styles (continued)

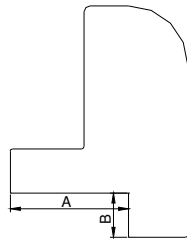
Notch Out
Beaded L Frame (A) *



$$A \leq 1''$$

$$B \leq \frac{3}{8}''$$

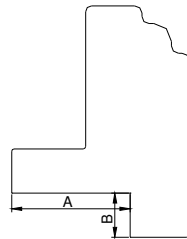
Notch Out
Bullnose L Frame (A) *



$$A \leq 1''$$

$$B \leq \frac{3}{8}''$$

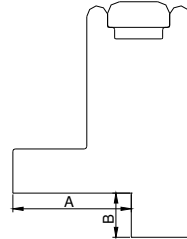
Notch Out
Colonial L Frame (A) *



$$A \leq 1''$$

$$B \leq \frac{3}{8}''$$

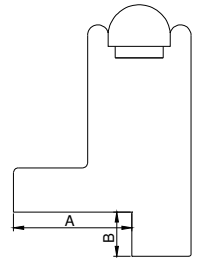
Notch Out
Vintage L Frame (A) *



$$A \leq 1''$$

$$B \leq \frac{3}{8}''$$

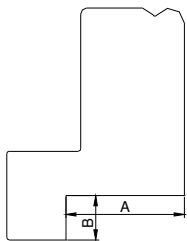
Notch Out
Rope L Frame (A) *



$$A \leq 1''$$

$$B \leq \frac{3}{8}''$$

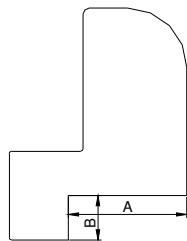
Notch Out
Beaded L Frame (B) *



$$A \leq 1''$$

$$B \leq \frac{3}{8}''$$

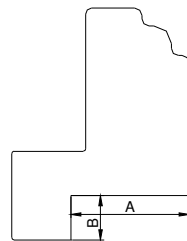
Notch Out
Bullnose L Frame (B) *



$$A \leq 1''$$

$$B \leq \frac{3}{8}''$$

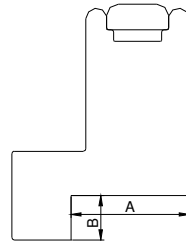
Notch Out
Colonial L Frame (B) *



$$A \leq 1''$$

$$B \leq \frac{3}{8}''$$

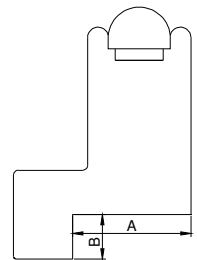
Notch Out
Vintage L Frame (B) *



$$A \leq 1''$$

$$B \leq \frac{3}{8}''$$

Notch Out
Rope L Frame (B) *



$$A \leq 1''$$

$$B \leq \frac{3}{8}''$$

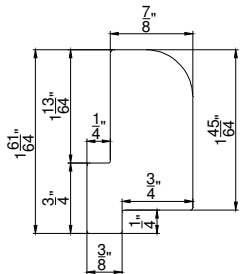
Also available

o Custom extensions* up to 2" for L frames

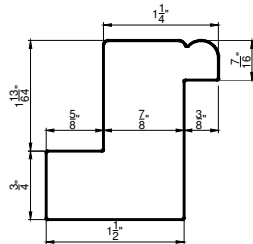
* Surcharge applies. Please see Options and Surcharges page for details.

Frame Styles (continued)

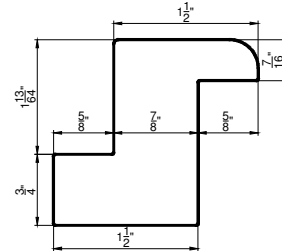
Bullnose Tilt-Out Z Frame



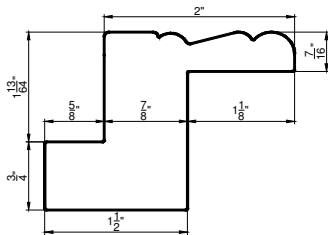
1 1/4" Beaded Z Frame



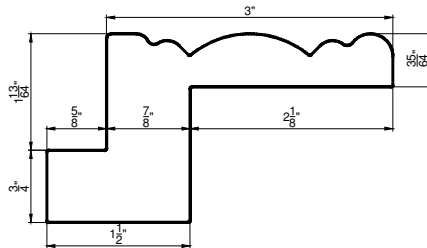
1 1/2" Bullnose Z Frame



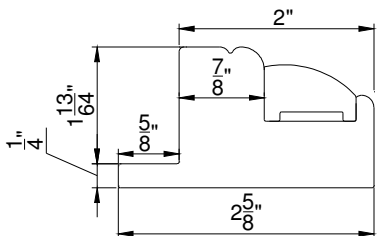
2" Bel Air Z Frame



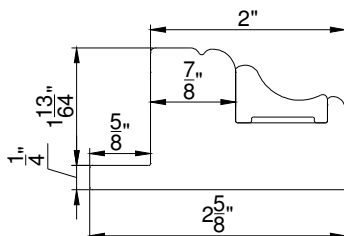
3" Crown Z Frame



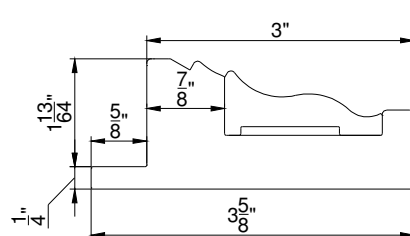
2" Camber Deco Frame



2" Classic Deco Frame



3" Ridge Deco Frame



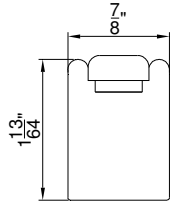
Also available

- Custom extensions* up to 1" for Z frames (except for tilt-out Z)
- 1/2", 1" and 1 1/2" standard extensions* and custom extensions* up to 2" for Deco frames

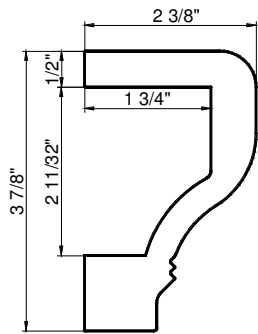
* Surcharge applies. Please see Options and Surcharges page for details.

Frame Styles (continued)

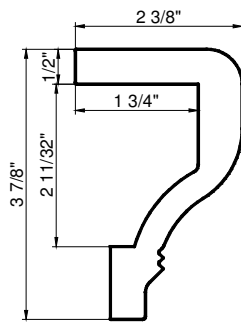
Vintage Hang Strip



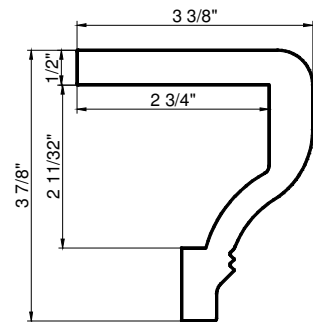
Curved Designer Sill Cap (L)



Curved Designer Sill Cap (D/HS)



Curved Designer Sill Cap (Z)



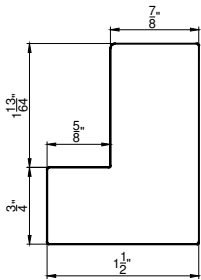
Also available

- Custom extensions* up to 2" for hang strips (OM)

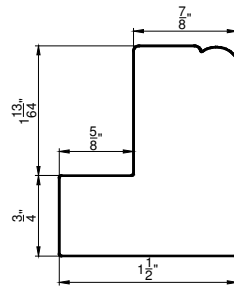
* Surcharge applies. Please see Options and Surcharges page for details

Frame Styles (continued)

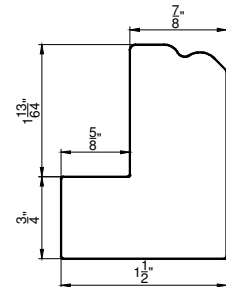
1¼" Beaded Z &
1½" Bullnose Z Sill Plate



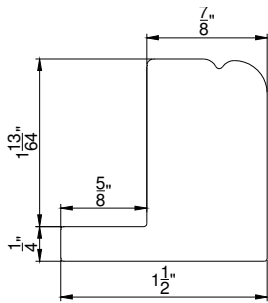
2" Bel Air Z Sill Plate



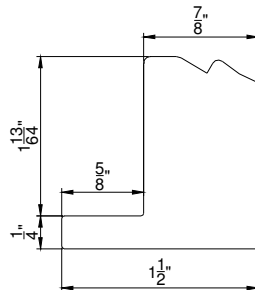
3" Crown Z Sill Plate



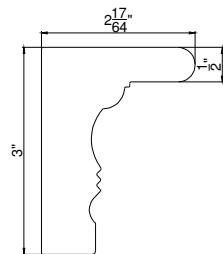
2" Deco Sill Plate



3" Ridge Deco Sill Plate

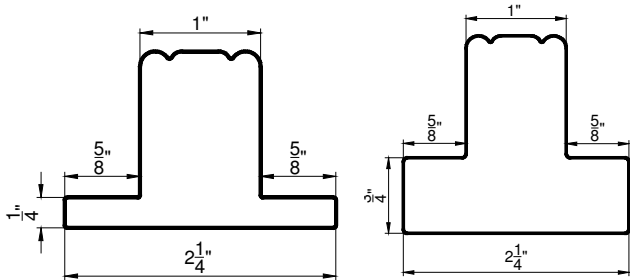


Deco Sill Frame

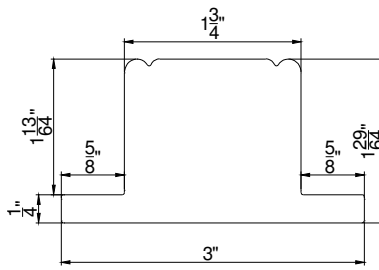


Frame Styles (continued)

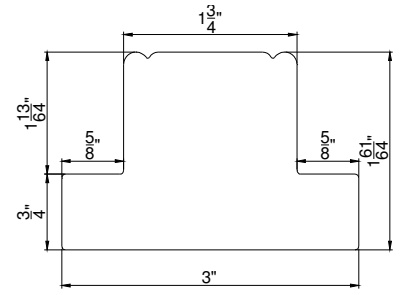
1" T Post w/ 1/4" Thick Light Block (Deco) 1" T Post w/ 3/4" Thick Light Block (L/Z/HS/Direct Mount)



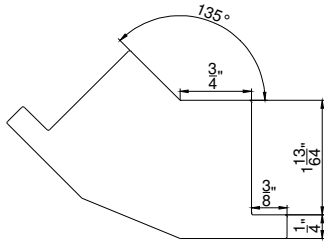
1 3/4" T Post w/ 1/4" Thick Light Block (Deco)



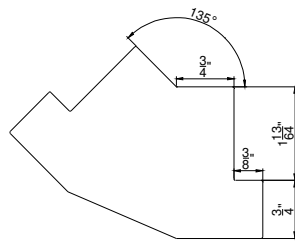
1 3/4" T Post w/ 3/4" Thick Light Block (L/Z/HS/Direct Mount)



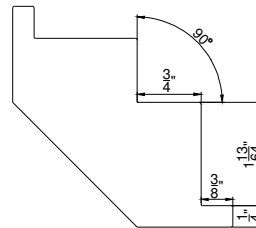
Bay Post w/ 1/4" Thick Light Block (Deco)



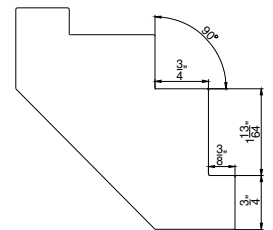
Bay Post w/ 3/4" Thick Light Block (L/Z/HS)



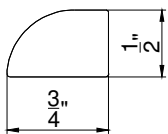
Corner Post w/ 1/4" Thick Light Block (Deco)



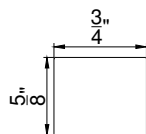
Corner Post w/ 3/4" Thick Light Block (L/Z/HS)



Scribe Trim



Light Block



Also available

- Custom depth* up to 2" / width* up to 7 1/2" for T Posts
- Custom angle bay posts*
- Light blocks come with 2 sided or 3 sided frames, direct mount and hang strip IM

* Surcharge applies. Please see Options and Surcharges page for details



General Product Specifications

<u>Description</u>	<u>Minimum</u>	<u>Maximum</u>		
		1¼"	1⅞"	2½" / 3½" / 4½"
Single Panel Width (Regular)	6"	16"	30"	36"
Multi-fold Panels (hinged shutters, up to 4 panels)	6"	16"	26"	26"
Multi-fold Panels (track shutters, up to 4 panels)	6"	N/A	20"	20"
Single Panel Width (for Bypass Panel With Center Stile)	6"	N/A	30"-50"	36"-50"
Single Panel Height	10"	133"	133"	133"
Shutter Width (Without T Post)	N/A	4x single panel width (bifold) + frame		
Shutter Width (With T Post)	N/A	Unlimited (frame pieces exceeding 142" will be spliced)		
Shutter Height	N/A	133" + frame		

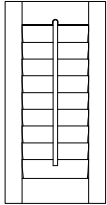
Shutters without bottom supports

Sussex shutters will be covered by our warranty for this application, subject to our standard specification limitations and the guidelines listed below:

All Sussex panel configurations:

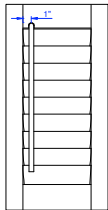
- You must inform Norman Shutters of situations where shutters will not have bottom support when placing the initial order, or warranty will be considered void.
- Informing Norman Shutters when placing such orders ensures that the factory will add extra hinges to support the panel. This will reduce the probability of the panels sagging.
- If you fail to notify Norman Shutters that the shutter will be used without a bottom support or used as doors, this will constitute a misapplication of the shutter. Consequently, you will be responsible for the cost of any RGA Reorder that is submitted.
- If you want a bifold shutter, a track must be ordered to support the panels.

Tilt Rods



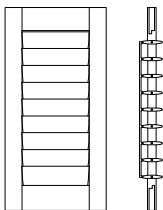
Standard Tilt Rod
Default Location

In the middle of the panel on front side (default).



Offset Tilt Rod*
Default Location

On the front side of the panel and at 1" from the louver ends on the hinged side.
Optional location: per your request.



Hidden Tilt Rod*
Default Location

Attached to the louver's edge on the back and the hinged side of the panel and flushed with the edge of louver. It sits in route area of stile when louvers are in close position. It is not available for 1¼" or 1⅞" louver. The tilt rod is split when the number of louvers exceeds the limits as listed below:

Louver Size	Maximum Possible Louvers (approximately 48" in panel height)
2½"	21
3½"	14
4½"	10

- For even numbers of louvers, the number of louvers operated by the top and the bottom hidden tilt rods will be the same.
- For odd numbers of louvers, the number of louvers operated by the bottom hidden tilt rod will be one more than the number of louvers operated by the top tilt rod.

Divider Rails

- A divider rail is an extra rail in the middle of the panel.
- Creates two sections in the panel so louvers can be operated independently.
- Strengthens the panel and enhances panel structural integrity.
- Required for panel heights over 72”.
- For 1¼” Colonial louver, divider rail is required for panel heights over 42”.
- For other louver sizes, divider rail is required for panel heights over 72”.

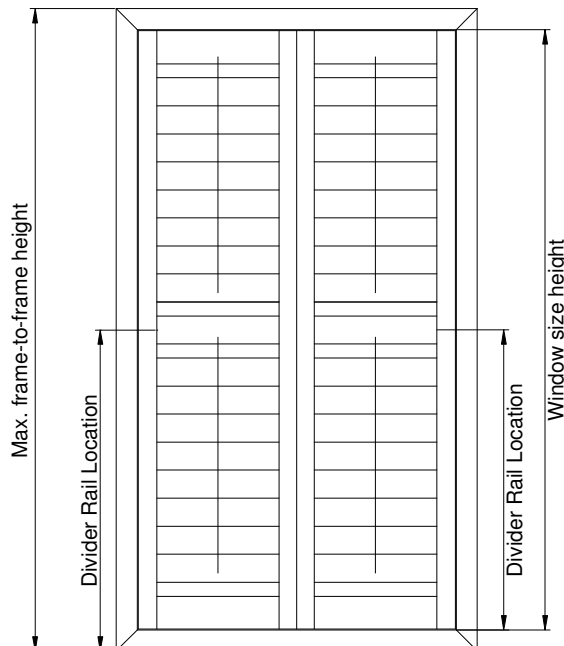
Specifications

- Standard width: 3”
- Default location: center of the panel unless specified otherwise

Measurements:

- Window size:
 - Measure from the bottom of the window to the center of the divider rail.
- Max frame-to-frame:
 - Measure from the bottom of the frame to the center of the divider rail.
- Position:
 - Per customer’s specification. However, the divider rail may be adjusted to a lower or higher position, within our allowable deviation to ensure reinforcement and aesthetics of the shutter.

When placing the order, please clearly specify if the divider rail position needs to line up with that of other shutter divider rails in the same room. Please also refer to the table



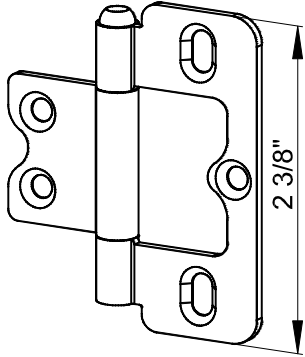
Divider rail allowable deviations

Louver Size	Allowable ± Deviation
1¼"	½"
1⅝"	¾"
2½"	1"
3½"	1½"
4½"	2"

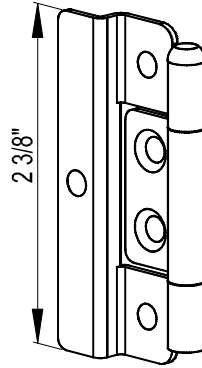
Hinges

Sussex® Shutters

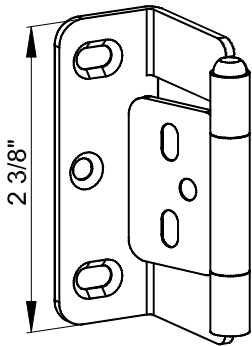
Self-Mortise Hinge



Rabbit Hinge



L Hinge



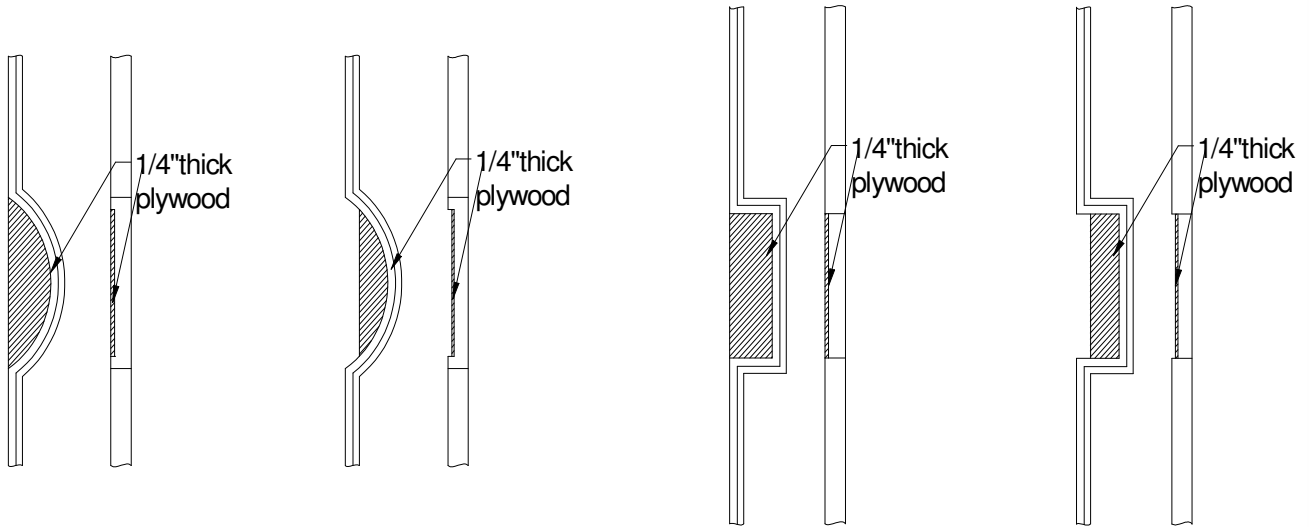
Hinges are available in :
Silk White, Bisque, Pearl, Bright Brass, Antique Brass, Black, Nickel plated and Stainless Steel*

* Surcharge applies. Please see Options and Surcharges page for details.



French Door Cutout

FRENCH DOOR CUTOUT



Type A

Type B

Type C

Type D

Type A: Curved Flush Cutout
Type B: Curved Offset Cutout
Type C: Rectangular Flush Cutout
Type D: Rectangular Offset Cutout

Note:

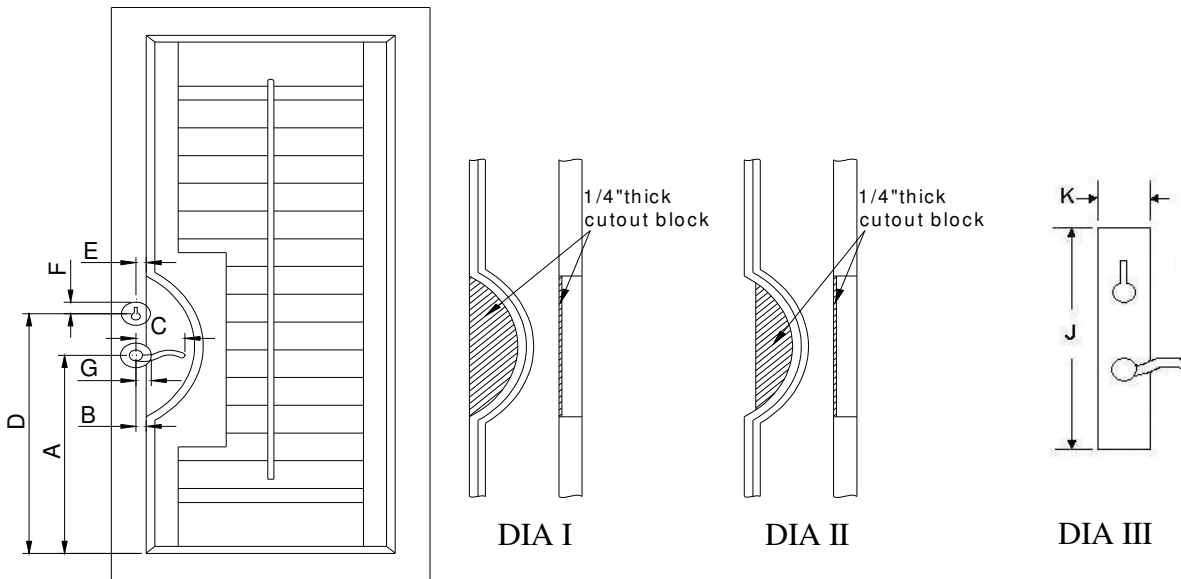
- Type A and C cutout are flush with frame
- Type B and D cutout are offset to accommodate French Door with trim around the glass.

L frame is preferred for French Door Installation. There will be approximately 1/2" gap between the edge of the handle and cutout for handle or 2" gap between edge of knob and cutout for round knob. If cutout will be over glass area then light can come through cutout area. In this case, back of frame will be routed out and 1/4" thick plywood will be placed on back of frame in cutout area. Please provide maximum frame-to-frame measurement for shutter size.



French Door Cutout

FRENCH DOOR CUTOUT TYPE A CURVE FLUSH CUTOUT



- A. Bottom of L frame to center of handle pivot. _____
- B. Edge of L frame to center of handle pivot. _____
- C. End of handle to center of handle pivot. _____
- D. Bottom of L frame to center of lock. _____
- E. Edge of L frame to center of lock. _____
- F. Center of Lock to top edge of lock base plate. _____
- G. Center of handle pivot to edge of handle base plate. _____
- H. Is the handle on left or right side of the door? _____
- I. Is frame with cutout-block required? _____

If the base plate is square (see DIA III), then please provide following information:

- J. Square base plate height. _____
- K. Square base plate width. _____

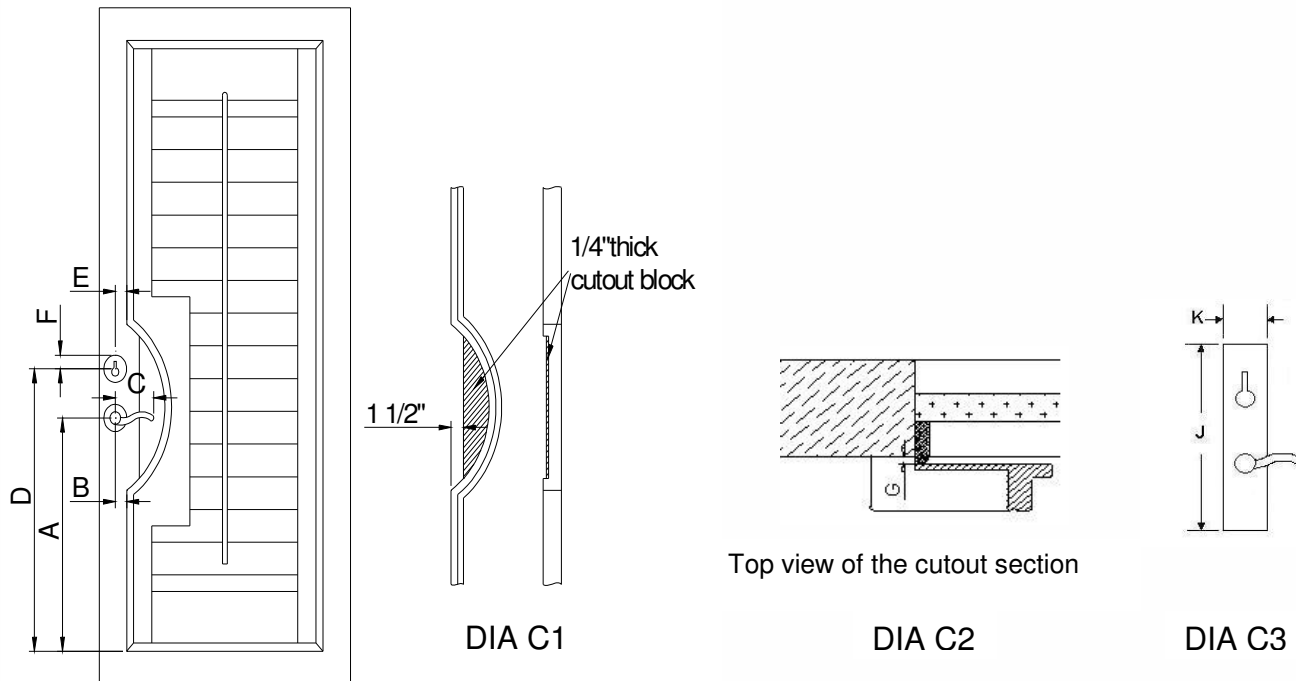
* If your French door does not have a lock, please write "N/A" on D, E, and F.

* Cutout-block piece will be made according to DIA II if handle or lock base plate can hit cutout-block piece, otherwise cutout block piece will be made according to DIA I



French Door Cutout

FRENCH DOOR CUTOUT TYPE B CURVE OFFSET CUTOUT



- A. Bottom of L frame to center of handle pivot. _____
- B. Edge of L frame to center of handle pivot. _____
- C. End of handle to center of handle pivot. _____
- D. Bottom of L frame to center of lock. _____
- E. Edge of L frame to center of lock. _____
- F. Center of Lock to top edge of lock base plate. _____
- G. Projection of trim. _____
- H. Is handle on left or right side of the door? _____
- I. Is frame with cutout-blocked required? _____

If the base plate is square (see DIAC3), then please provide following information:

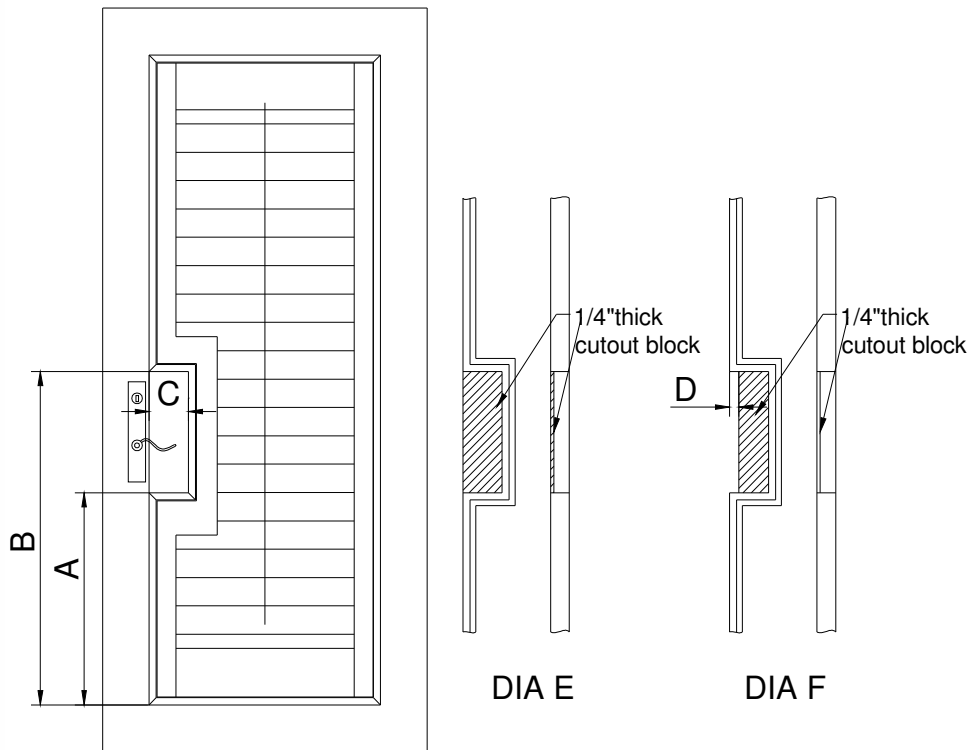
- J. Square base plate height. _____
- K. Square base plate width. _____

Cutout-block piece will not go up to outside edge of L frame. It will go up to inside edge of L frame only. (DIA C1)



French Door Cutout

FRENCH DOOR CUTOUT TYPE C RECTANGULAR FLUSH CUTOUT



A. Bottom of L frame to bottom edge of cutout .

B. Bottom of L frame to top edge of cutout .

C. Depth of cutout .

D. Outside edge of L frame to edge of cutout-block.

E. Is the handle on left or right side of the door?

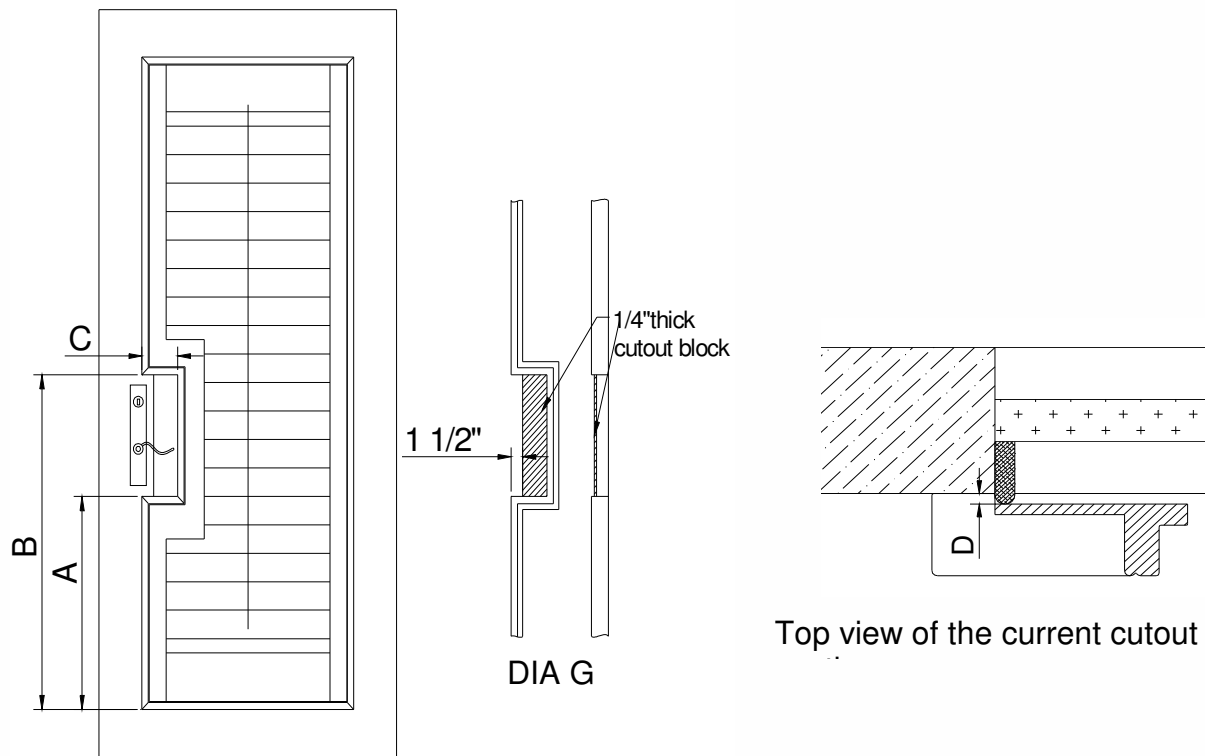
F. Is frame with cutout-block required?

- If cutout-block piece will not hit handle base plate, the value of D should be zero. (DIA E)
- If cutout-block piece might hit the handle base plate, please provide measurement D. (DIA F)



French Door Cutout

FRENCH DOOR CUTOUT TYPE D RECTANGULAR OFFSET CUTOUT



A. Bottom of L frame to bottom edge of cutout .

B. Bottom of L frame to top edge of cutout .

C. Depth of cutout .

D. Projection of trim.

E. Is the handle on left or right side of the door?

F. Is frame with cutout-block required?

- Cutout piece extends up to the inside edge of L Frame only (DIA G).

SHUTTER WARRANTY

Norman shutters have a Lifetime Limited warranty for as long as the original purchaser owns the shutter(s) (or as otherwise stated*), PROVIDED THAT such products were (i) properly installed; and (ii) such products were made or assembled exclusively from original materials and components. Any resale or other transfer of the product and/or materials voids this warranty.

Wood Shutters come with a Three year limited warranty on color fastness of solid colors. Wood shutters have a Three Year limited warranty on the color fastness of stained products and none on lacquer stained and oiled stained products. Although washed colors are not typically warranted in the shutter industry, we have a One Year limited warranty for the color fastness of the washed colors. Washed colors are color codes 100 to 109. Composite Wood solid color shutters have a lifetime limited warranty on color fastness. We warrant the workmanship of the Natural Expression[®] shutters but we do not warrant against the possible warping, bowing, twisting, chipping or discoloration of the natural woven insert.

This warranty does not cover any condition of damage to the shutter or window from unauthorized repairs, motorized devices, accidents, alterations, misuse, abuse, act of God, normal wear and tear, exposure to elements, excessive humidity, fading, discoloration over time or failure to follow the Norman approved instructions with respect to measurement, installation, cleaning or maintenance. Improper, inappropriate, or unauthorized replacement parts, repairs or maintenance voids this warranty.

This warranty excludes all liability for removal of the shutter and reinstallation in the same or another window, or damage to the window frame, glass or any other portion of the window. Due to manufacturing, natural variations in color, grain and texture in the products, Norman or its licensed fabricators/distributors are not able to guarantee exact matches on subsequent orders. Returns cannot be authorized due to these normal variations.

To obtain warranty service, please contact the dealer with whom you purchased the product from. Repair or remake of defective products is the sole remedy under this warranty and in no event shall Norman or its licensed fabricators/distributors be liable for costs to remove and/or reinstall the product. Repairs will be made with only like or similar parts. This warranty does not include shipping charges, costs of labor for measuring, installation, or trip charges. Warranty claims must be accompanied by proof of purchase, as well as details regarding the nature of the problem, location of the product, etc.

This warranty is EXCLUSIVE AND IN LIEU OF ALL OTHER OBLIGATIONS, LIABILITIES OR WARRANTIES. All other warranties, both expressed and implied, are explicitly disclaimed. In no event shall Norman International, Inc. or licensed Norman fabricators/distributors be liable or responsible for INCIDENTAL OR CONSEQUENTIAL DAMAGES, or for any other direct or indirect damage, loss, cost, expense or fee. Some states do not allow the exclusion or limitation of implied warranties, or incidental or consequential damages, so the above limitation may not apply to your state. This warranty gives you specific legal rights, and you may also have other rights, which vary from state to state.

*PerfectTilt[®] Motorization has a Two Year Limited warranty on motor and circuitry.