

Home Automation

HOME AUTOMATION OVERVIEW

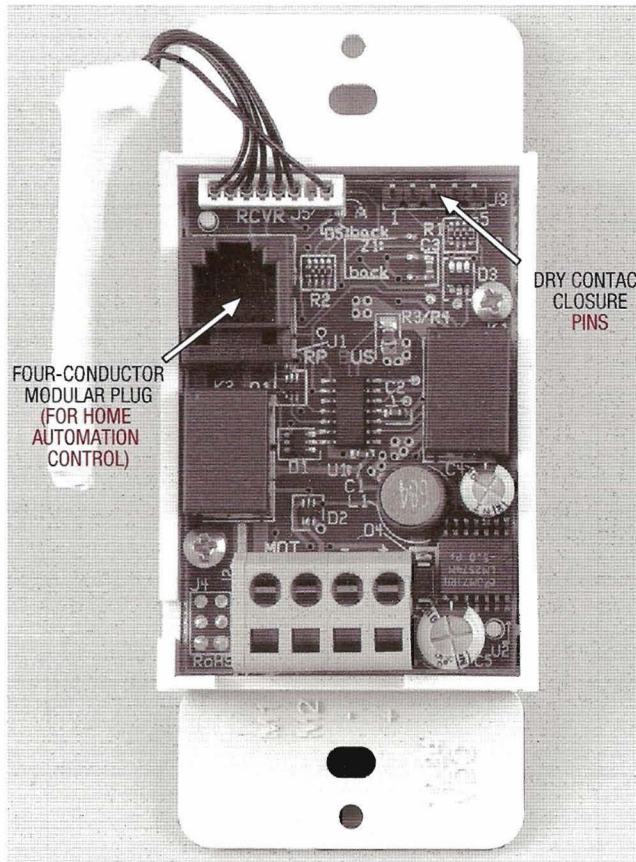
Home automation window coverings can operate with a remote control, a touch panel or even light sensors. In addition, operation can be programmed to raise and lower the window coverings at certain times of the day, on different days of the week.

Home automation systems can easily accommodate motor-only window coverings and Hard-Wired systems from Hunter Douglas. Our products are very versatile in adapting to the variety of home automation control sources.

Platinum™ Technology Automation

The Platinum™ Technology wall switch is also capable of direct integration into many home automation control systems. Various connections are possible through the four-conductor modular plug or dry contact closure pins on the back of the switch unit.

Contact your Hunter Douglas fabricator for more details.



PRE-WIRING

The best time to wire a house for home automation is while the house is being constructed. This minimizes the cost and effort. Wires should be run to all the windows even if the consumer is unsure when (and if) the motorized window coverings will be installed.

The following are recommended wire gauge and max wire runs:

- Up to 20' length — use wire gauge 20
- Up to 35' length — use wire gauge 18
- Up to 60' length — use wire gauge 16
- Up to 95' length — use wire gauge 14
- Up to 150' length — use wire gauge 12
- Up to 200' length — use wire gauge 10

CONSULT PROFESSIONALS

When selling motorized systems to integrate with a home automation system, it is important to work with a home automation professional. Not only is their expertise important in planning the installation, they are also the source for most home automation components.

Home Automation Control Via Platinum Wall Switch

